

NET2005 reserves the right to use the full force of the law in the protection of this intellectual property. No part of this guide may be reproduced in any form. This guide can only be sold by NET2005. If you have any information regarding the illegal reselling or duplication of this guide, Please report it to pchelp888@yahoo.com.

Disclaimer and/or Legal Notices

The reader is expressly warned to consider and adopt all safety precaution that might be indicated by the activities herein and to avoid all potential hazards. This is for informational purposes only and the author does not accept any responsibilities or liabilities resulting from the use of this information. While every attempt has been made to verify the information provided here, the author cannot assume any responsibility for any loss, injury, errors, inaccuracies, or inconvenience sustained by anyone resulting from the use of this information. These procedures should only be carried out by suitably qualified technicians. Please be careful as all electronic component is potentially dangerous when dismantled.

HP DV2000 Disassembly Guide	----- page 2-13
HP DV6000 Disassembly Guide	----- Page 14-31
HP DV9000 Disassembly Guide	----- Page 32-52
HP TX1000 Disassembly Guide	----- Page 53-74

HP Pavilion DV2000 Disassembly



Unplug power and turn laptop over.



Slide hatch over and Remove battery.



Remove palmrest and keyboard screws.

Laptop Video Issue Repair Guide – By NET2005



Remove hard drive, memory, and wireless card cover.



Remove hard drive cover, 2 screws then pull the silver tab to remove hard drive.

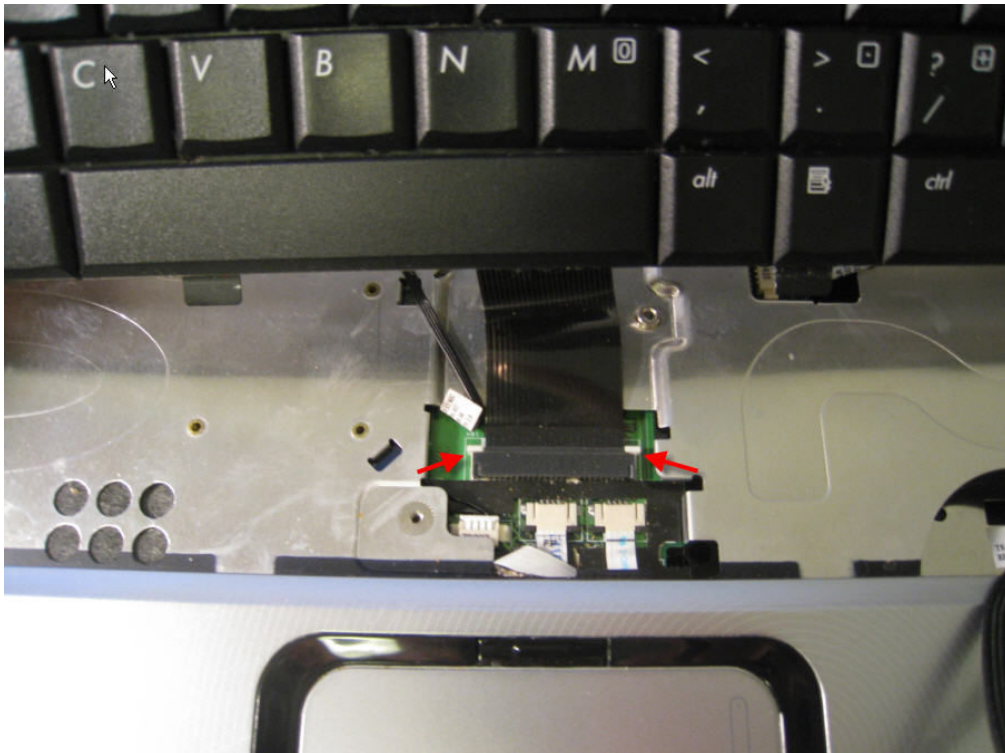
Laptop Video Issue Repair Guide – By NET2005



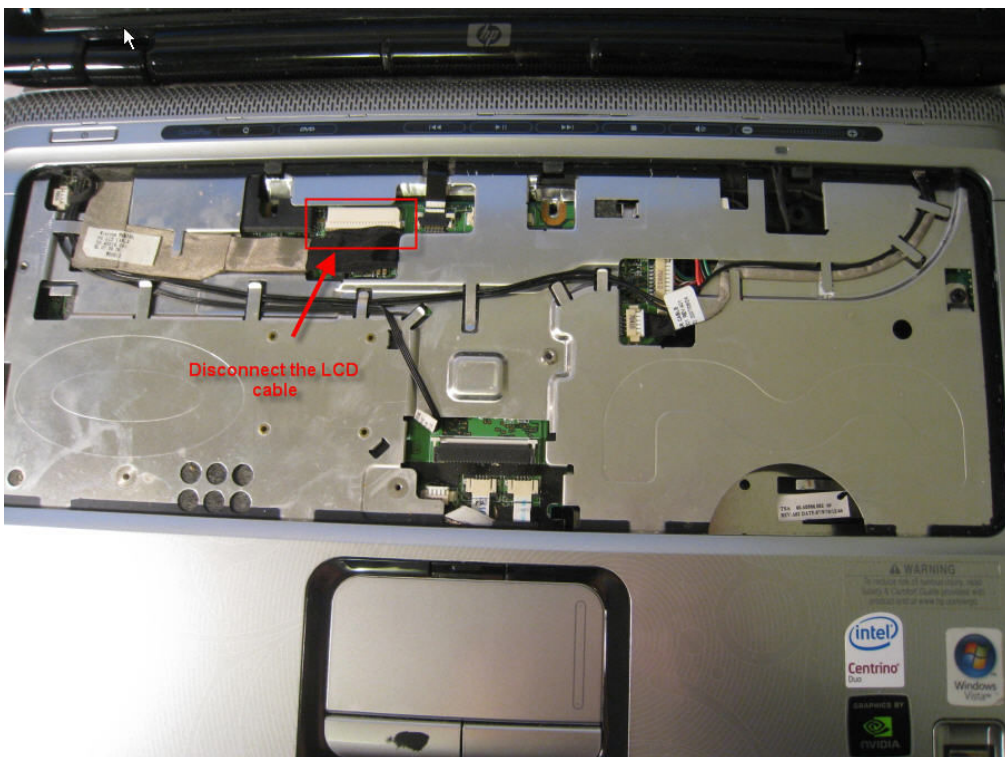
Remove the 2 palmrest screws after taking out the DVD drive.



Remove 2 screws, disconnect the three wireless antennas then remove the wireless card.

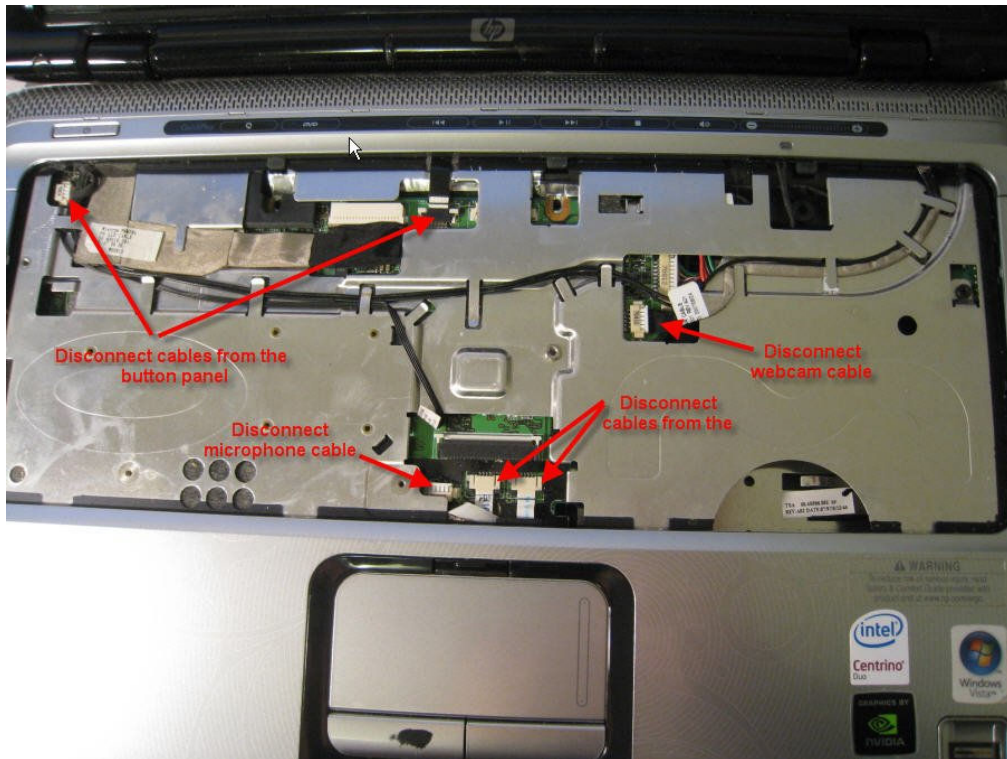


Remove keyboard

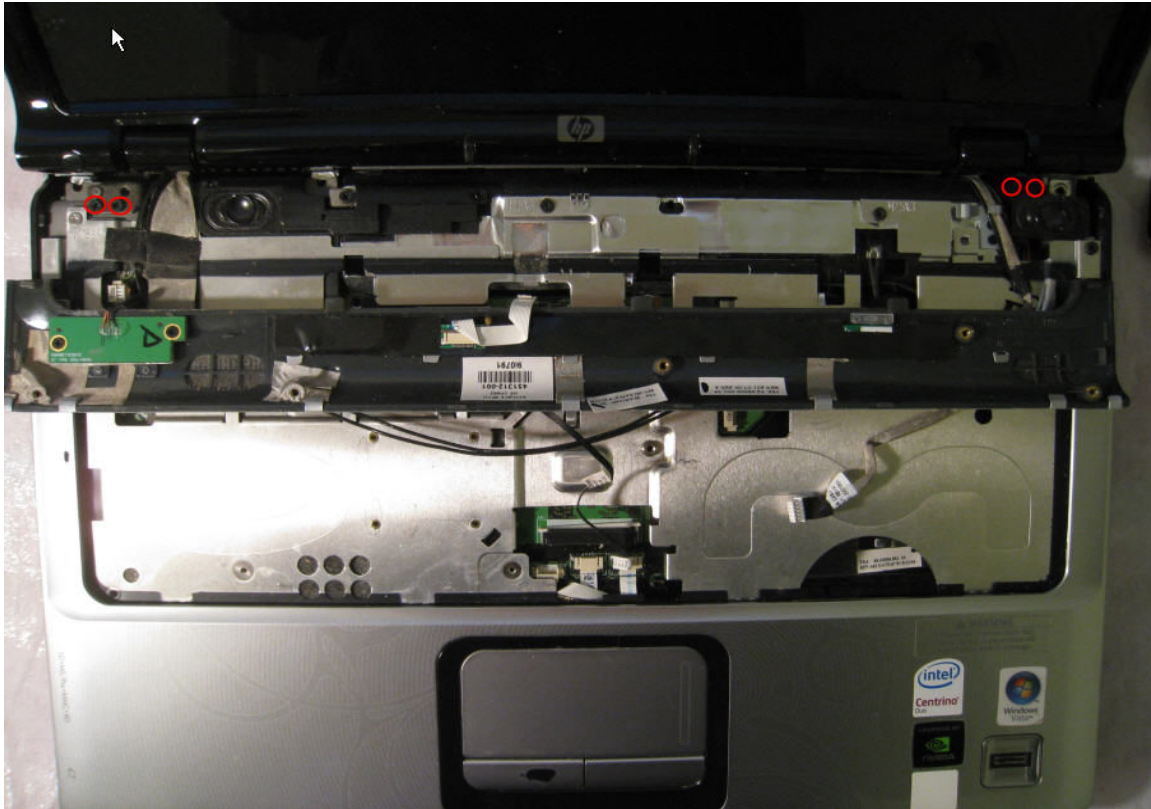


Disconnect LCD cable.

Laptop Video Issue Repair Guide – By NET2005



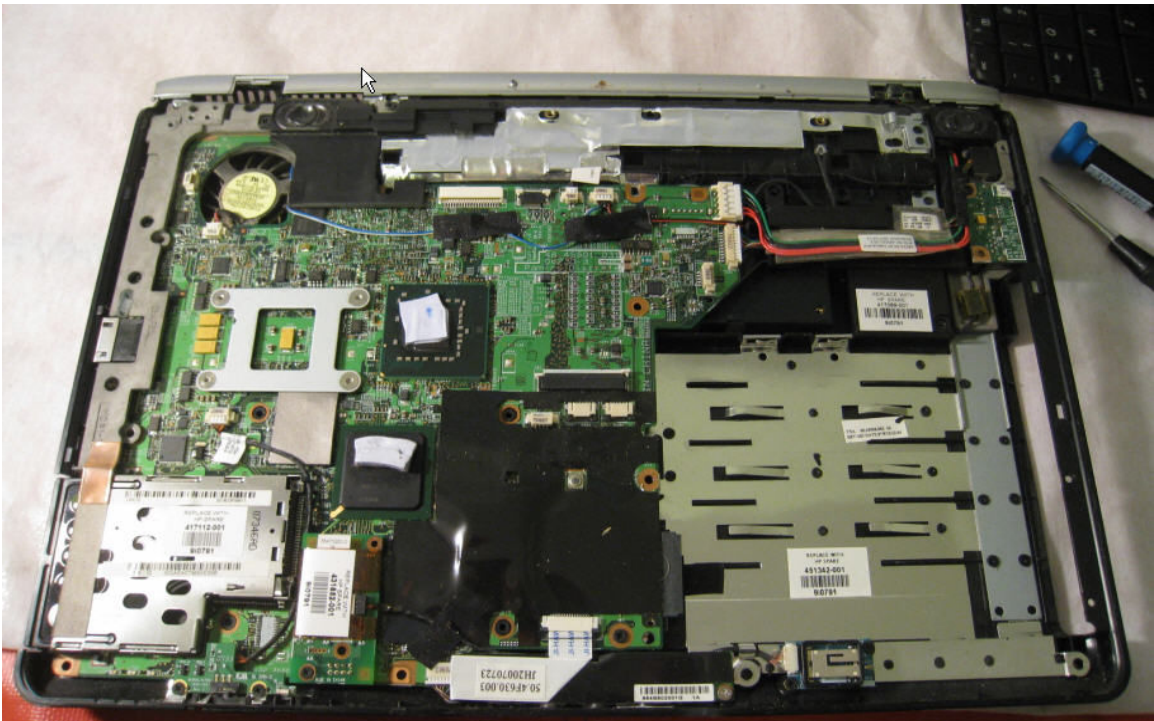
Disconnect all other cable connections.



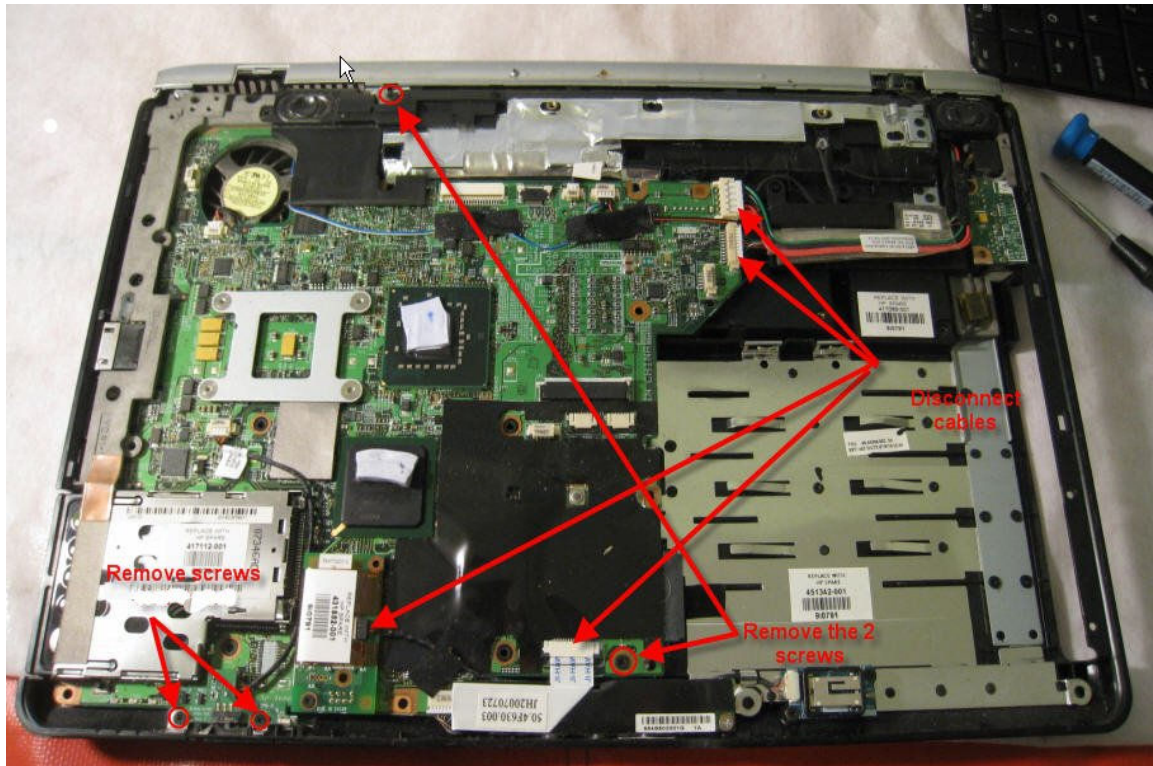
Remove power button panel. Remove 4 screws that holding down the LCD panel.



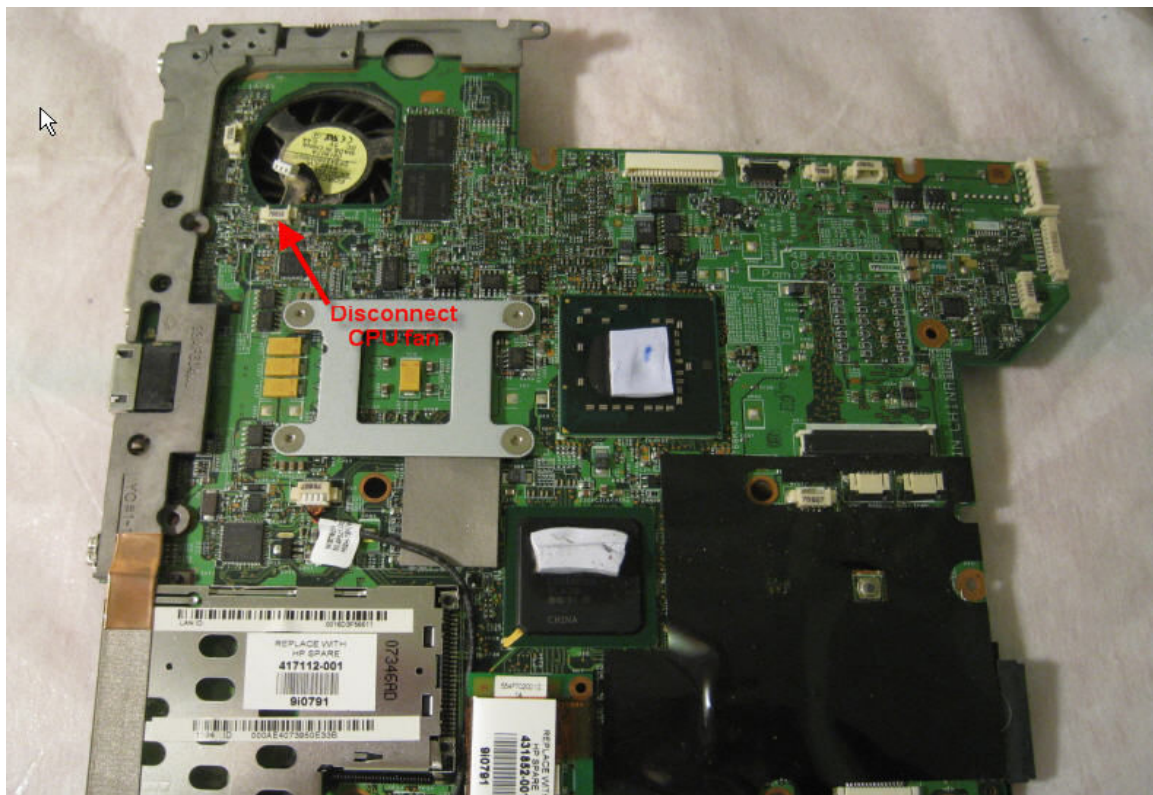
Detach LCD from Laptop.



Remove palmrest to reveal systemboard

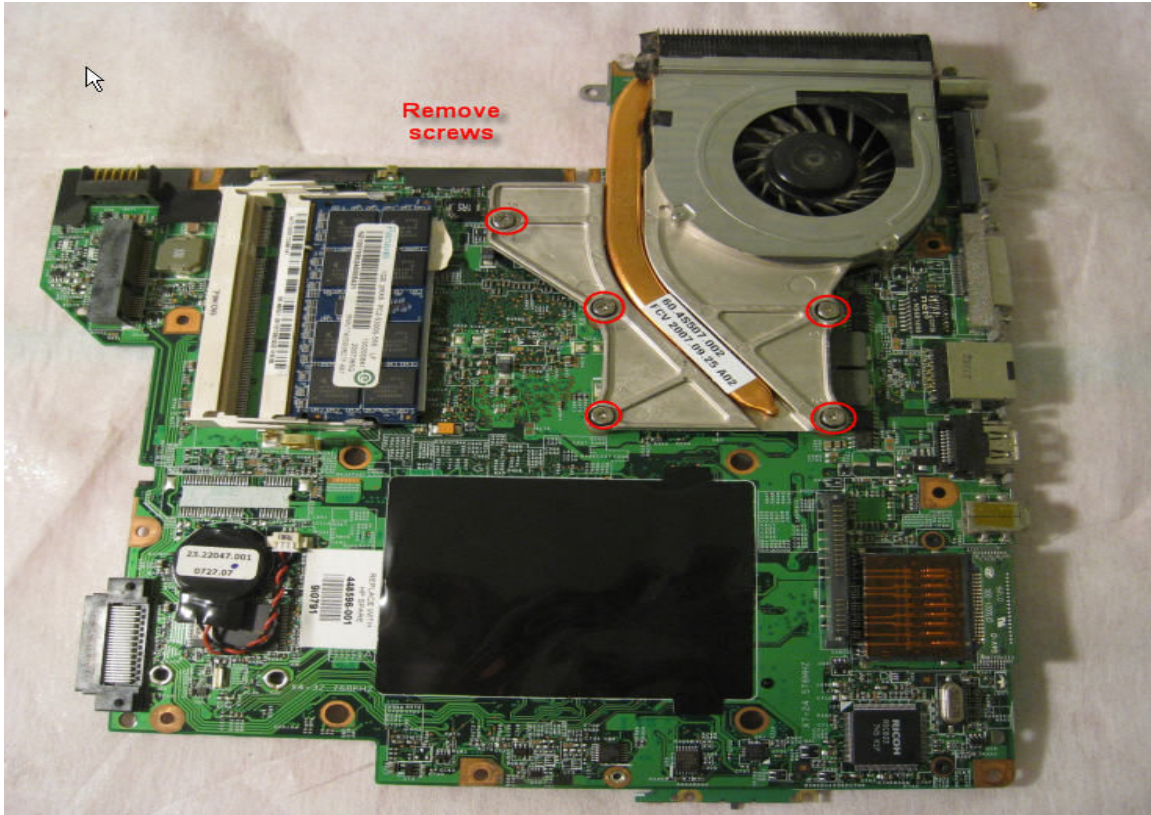


Remove 2 systemboard screws, 2 wireless switch screws, and disconnect cables from systemboard. Lift up the system on the right to 45 degree and pull it out.

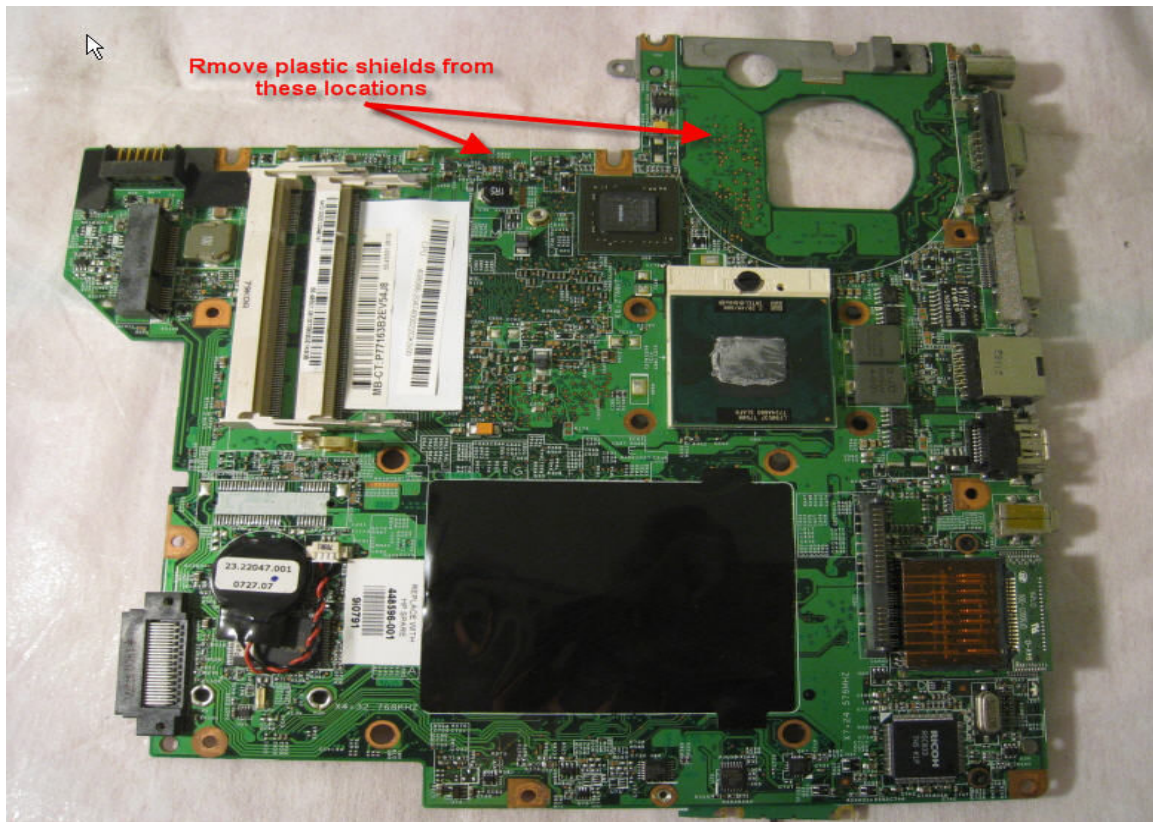


Laptop Video Issue Repair Guide – By NET2005

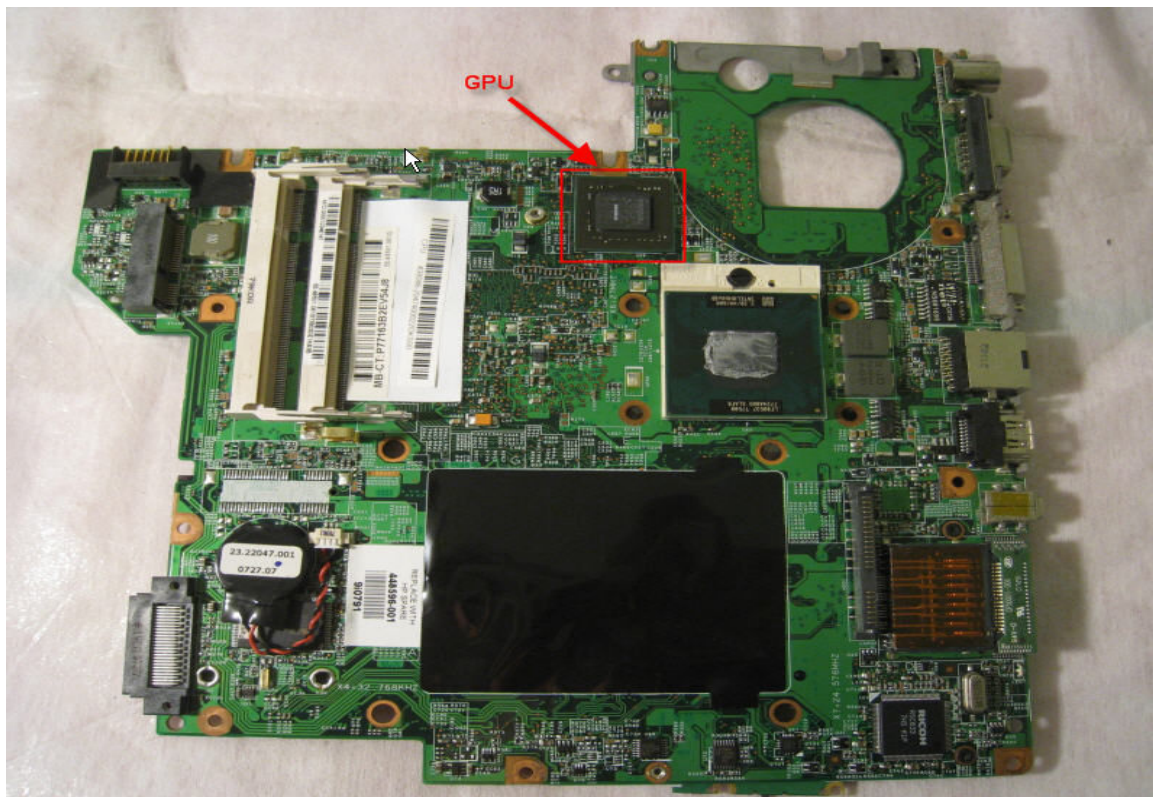
Disconnect Cooling fan.



Remove screws remove heatsink assembly from systemboard.



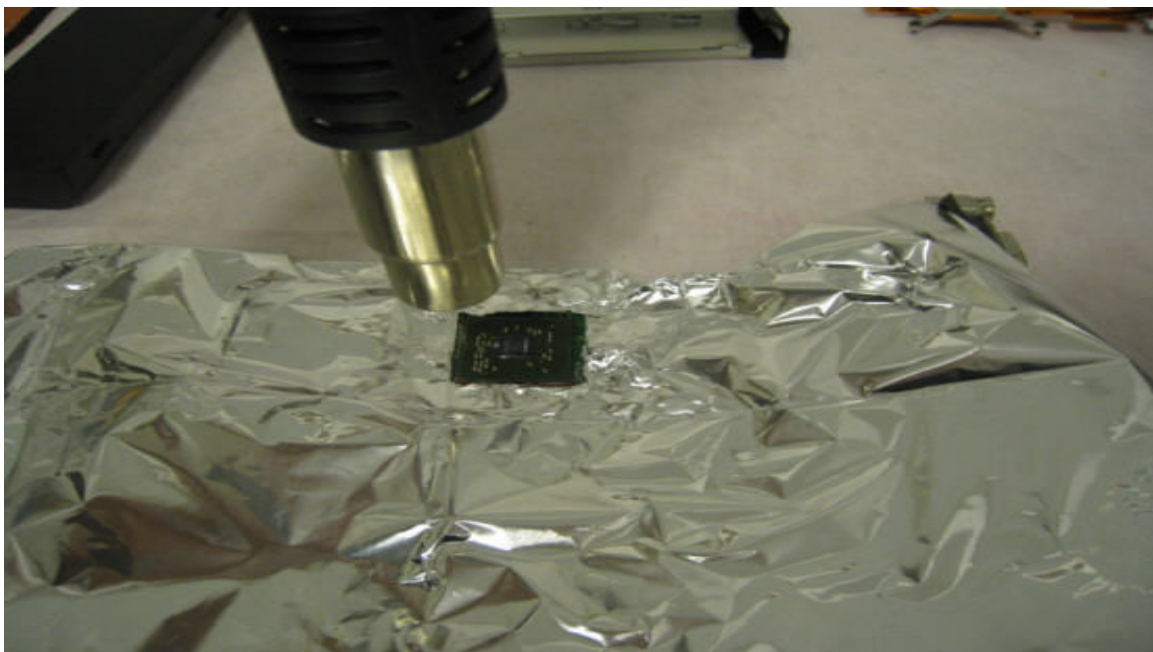
Remove plastic shields from noted locations.



Location of GPU.



Protect components around the GPU with aluminum foil to avoid plastic parts from melting. Don't wrap the whole board. You need to let the heat out or it will melt the plastic parts.

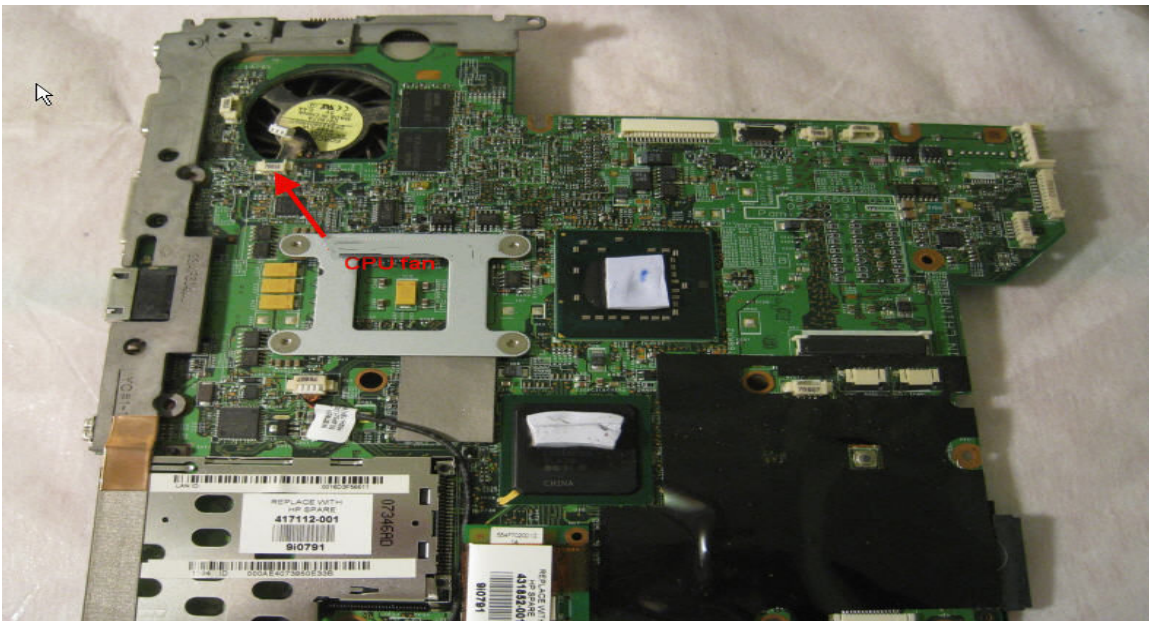


Now get ready to reflow with your hot air station or heat gun.



Test the system before you put all the screws back together.

Notes:

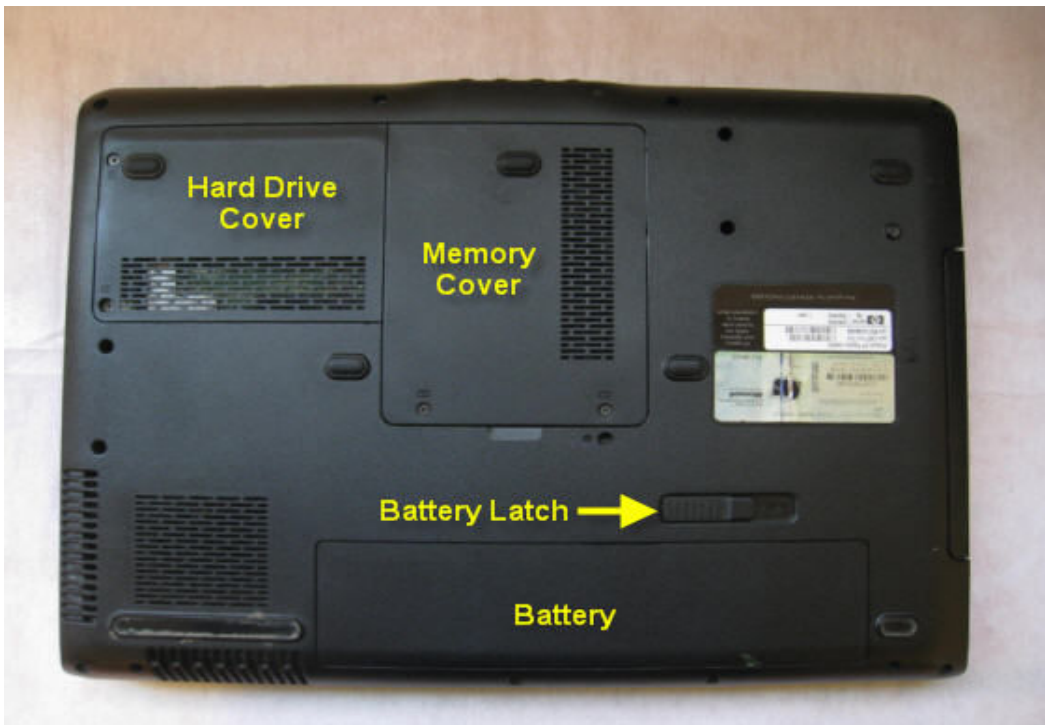


Reconnect Cooling fan.

HP Pavilion DV6000 Disassembly



Lights on but nothing on screen. This could also be the problem with the backlight or LCD inverter. Please use the LCD troubleshooting flowchart to isolate the defective part.



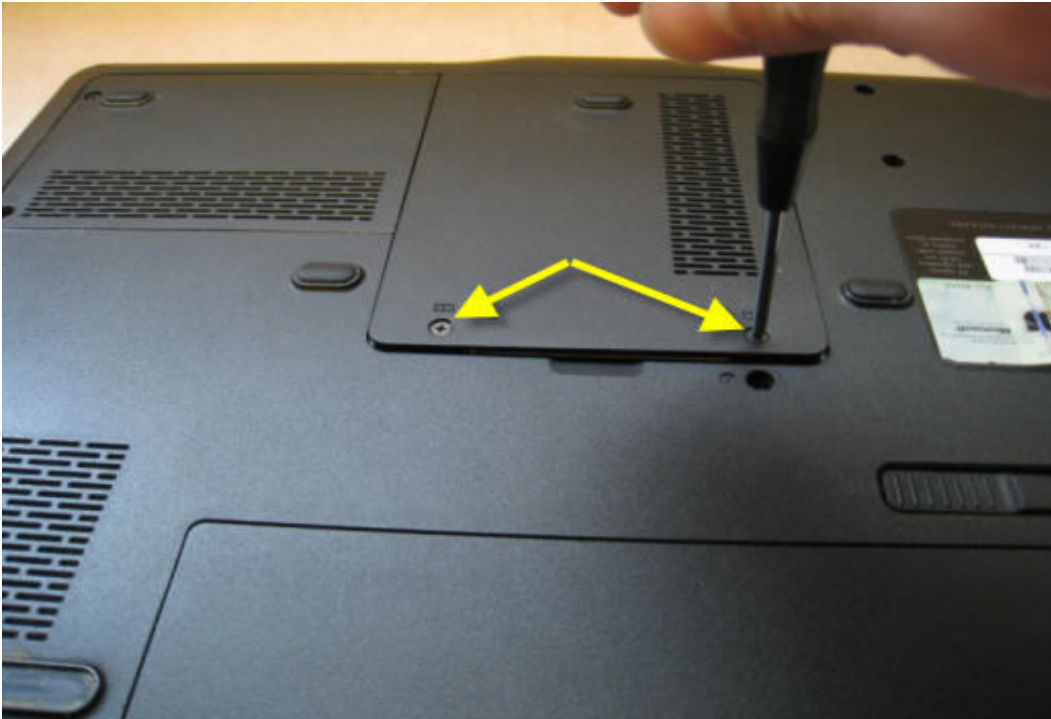
Back side of laptop



Slide latch to the right.



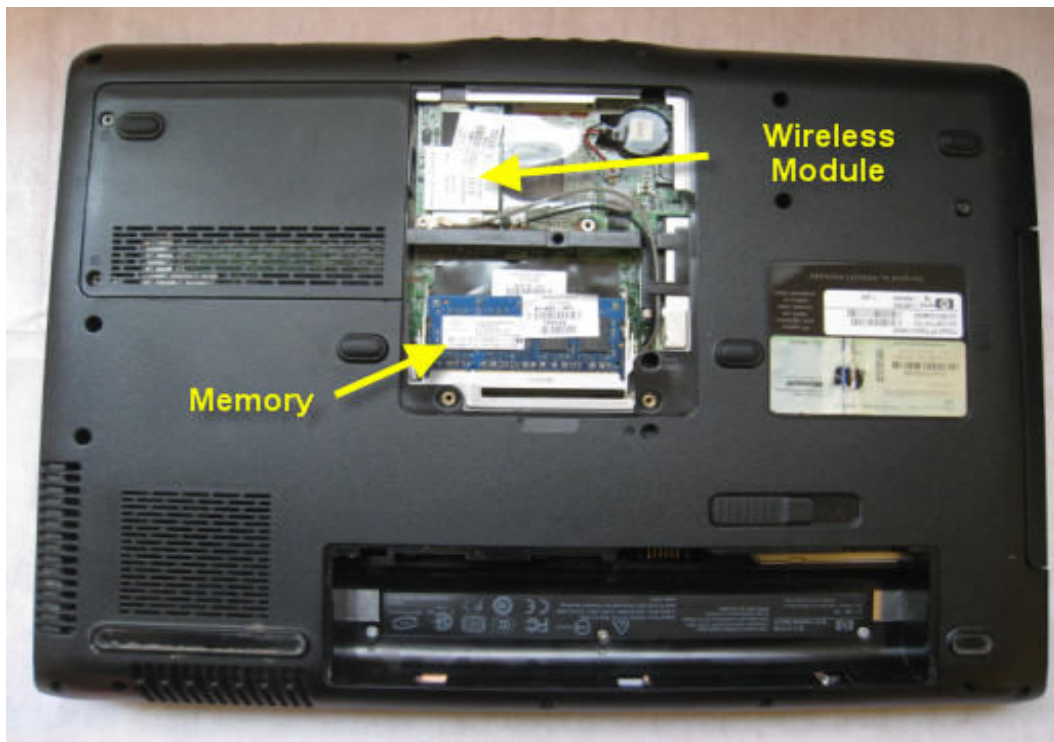
Lift the battery from the edge and swing it back to remove it.



Remove screws from the memory cover.



Remove the memory cover.



You should see the memory module, wireless card, and CMOS battery.



Loosen the two screws and remove the hard drive cover.



Remove the two screws from the hard drive connector.



Remove hard drive from laptop.

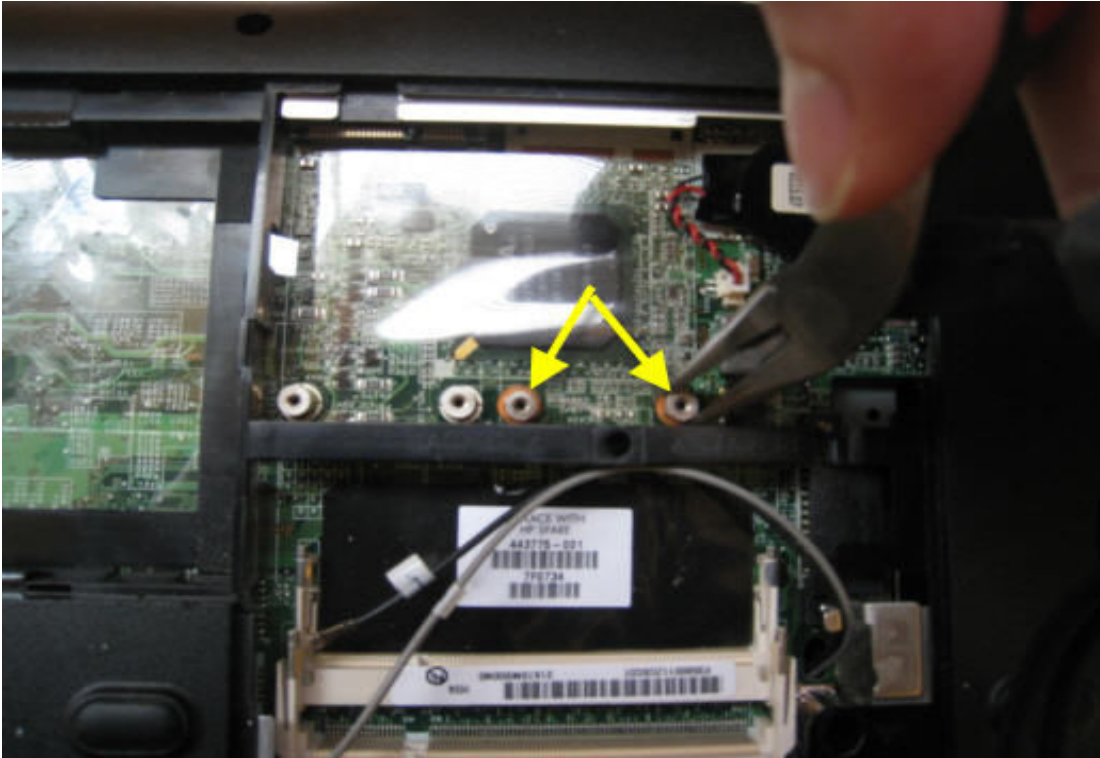
Laptop Video Issue Repair Guide – By NET2005



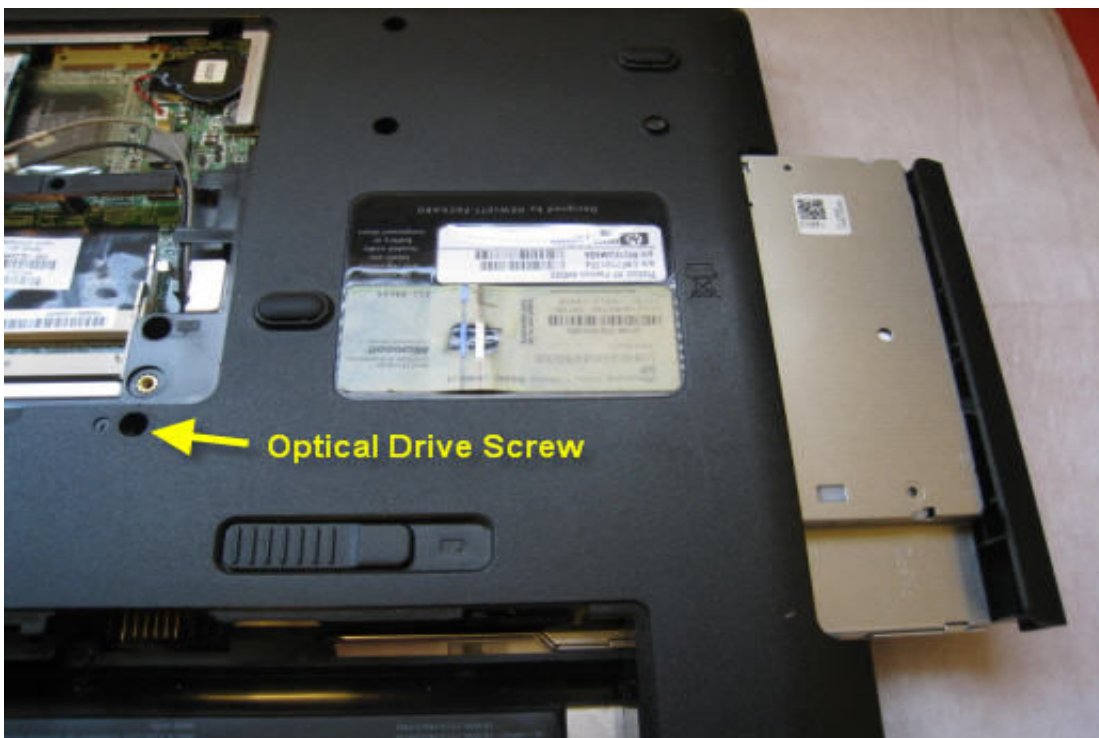
Spread the retaining tab on each side of the memory module socket to release the memory. Slide the module away from the socket at an angle to remove it.



Remove the wireless card antennas. Remove the two screws then remove the wireless card.



Remove two hex bolts from the systemboard.



Remove screw right outside of the memory cover and remove the DVD drive.

Laptop Video Issue Repair Guide – By NET2005



Remove the three screws under the DVD drive.



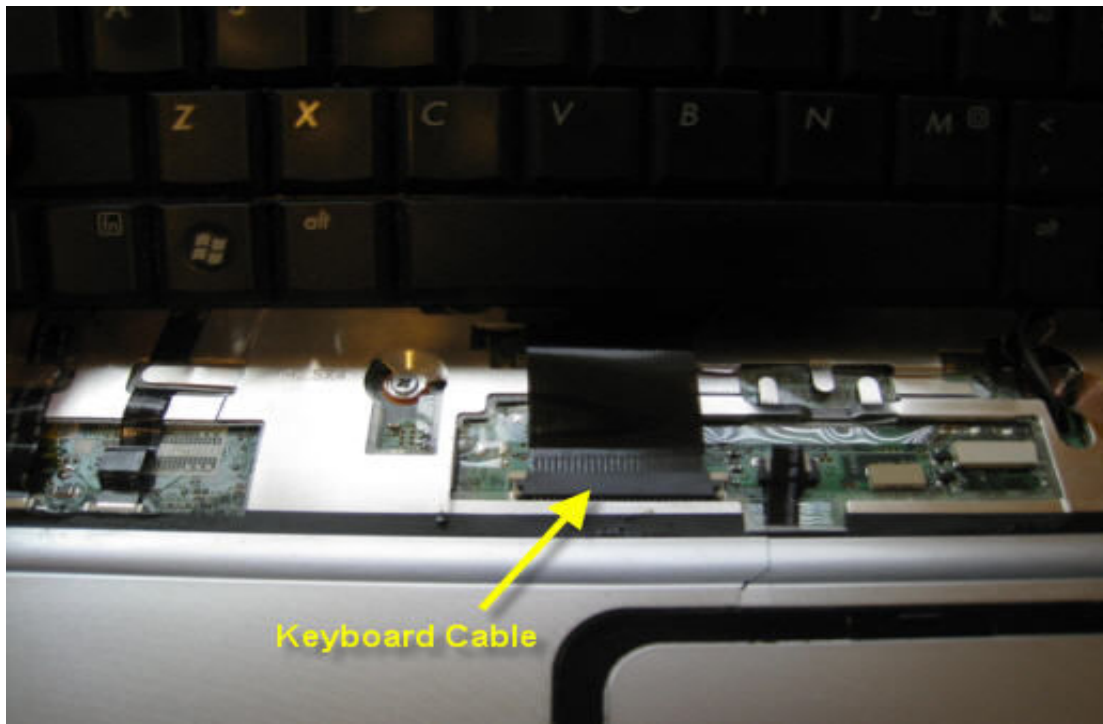
Remove all screws under the battery (light panel and keyboard screws). The ones you see in the picture are the ones for the light panel



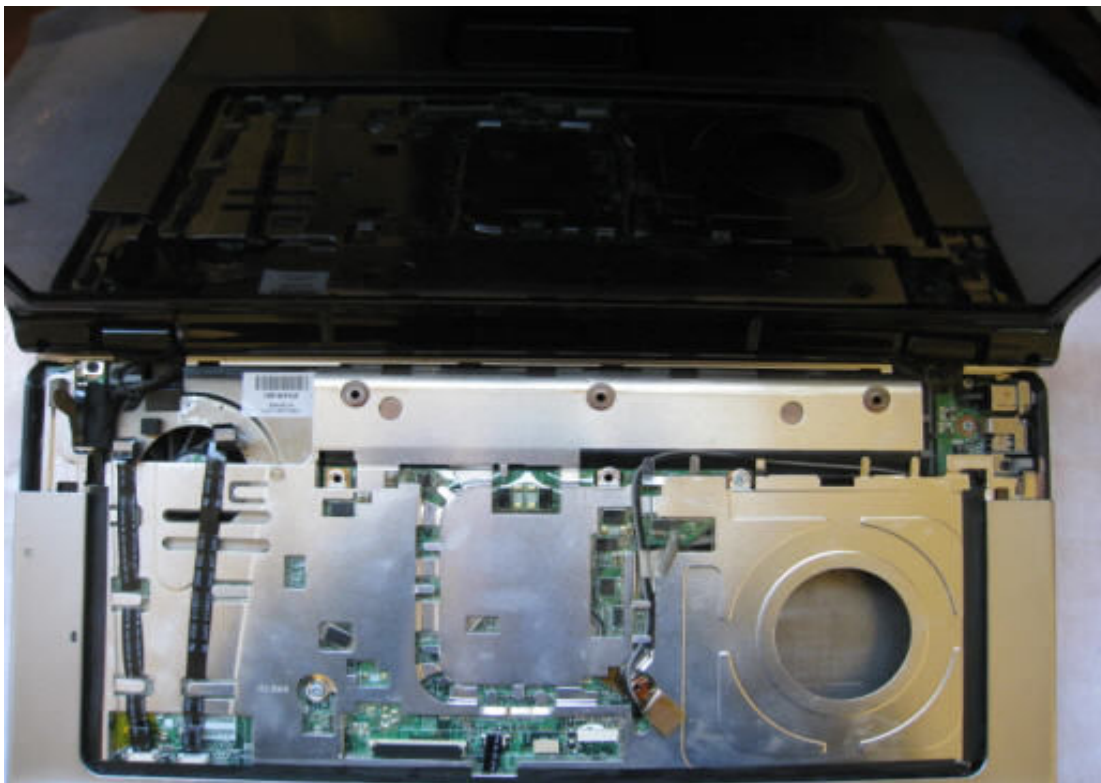
With all screws removed you can now lift the light panel from the edge.



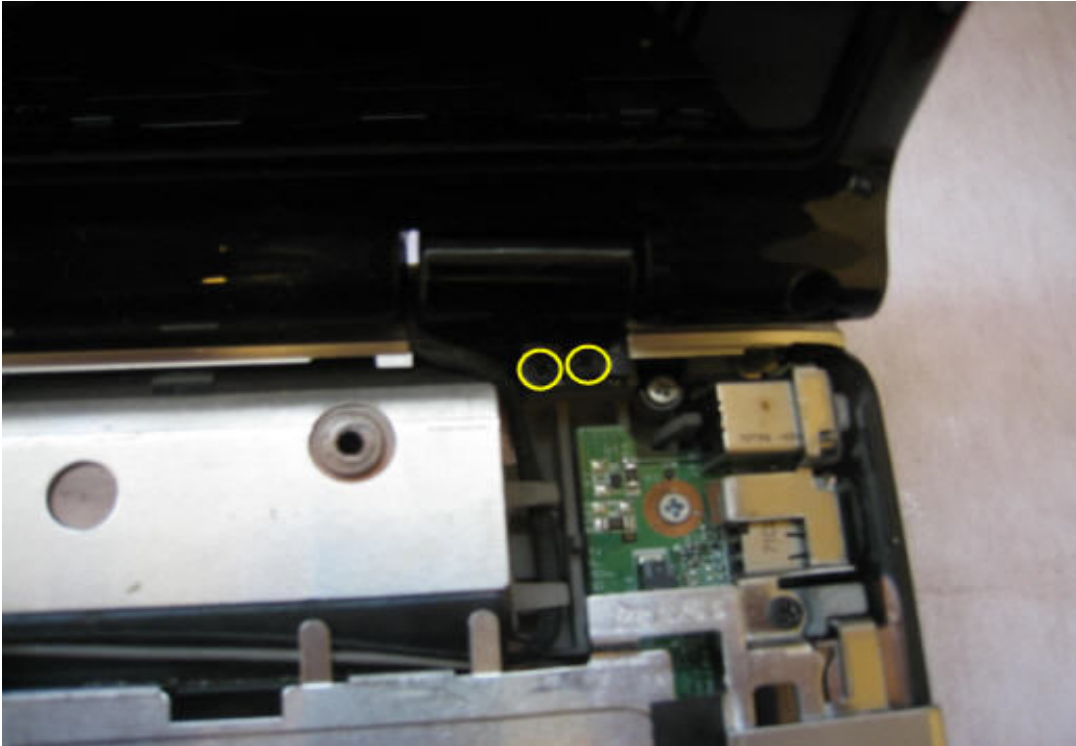
Disconnect the cables from the power switch panel.



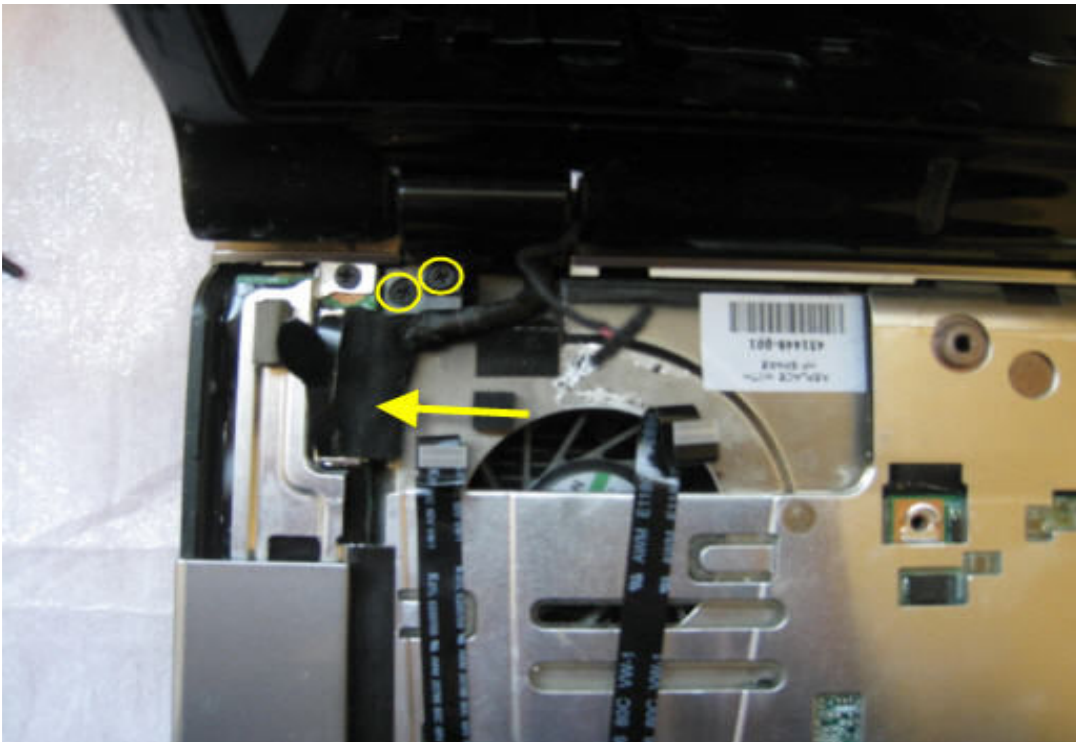
Slightly lift up keyboard and pull toward the LCD screen then disconnect the cable.



Power button panel and keyboard removed. Pull wireless antennas out of the system.



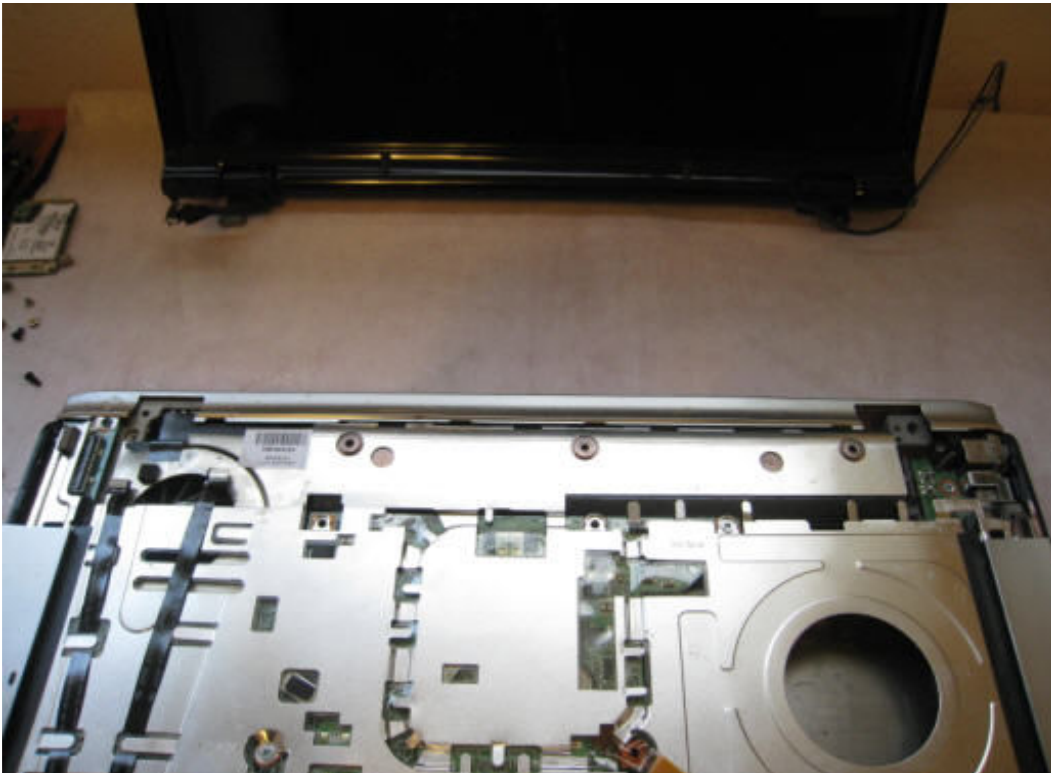
Remove two screws from LCD panel.



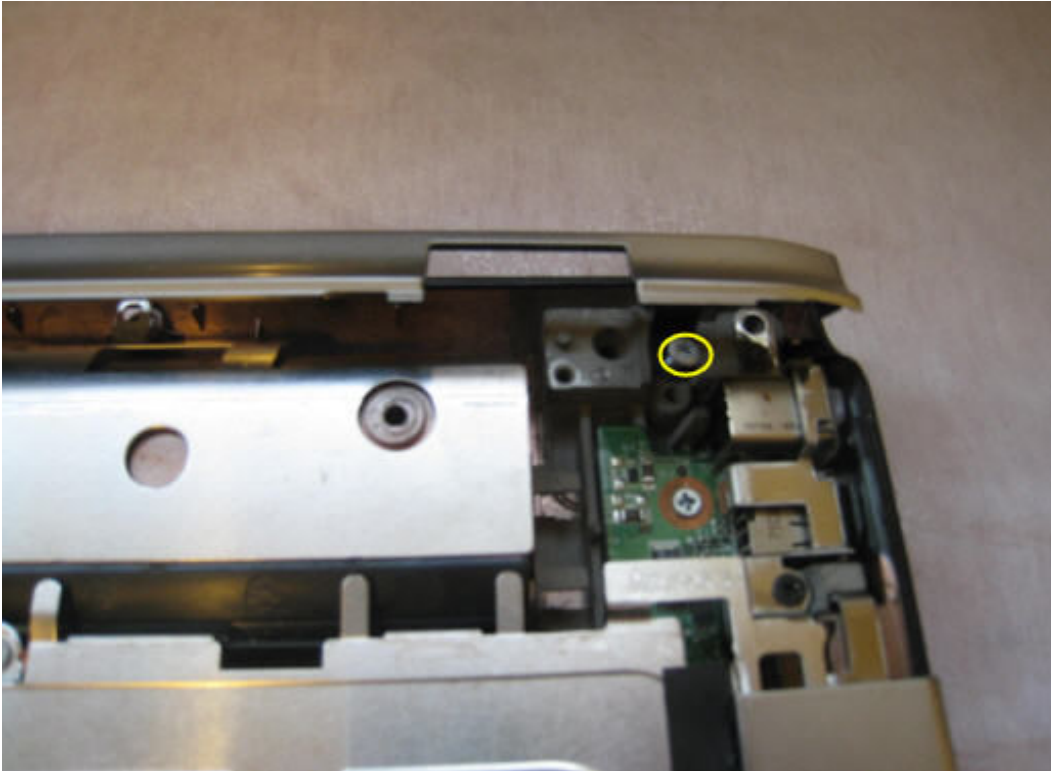
Remove two screws from LCD panel on the left.



Disconnect LCD cable from laptop.



Remove LCD panel from laptop.



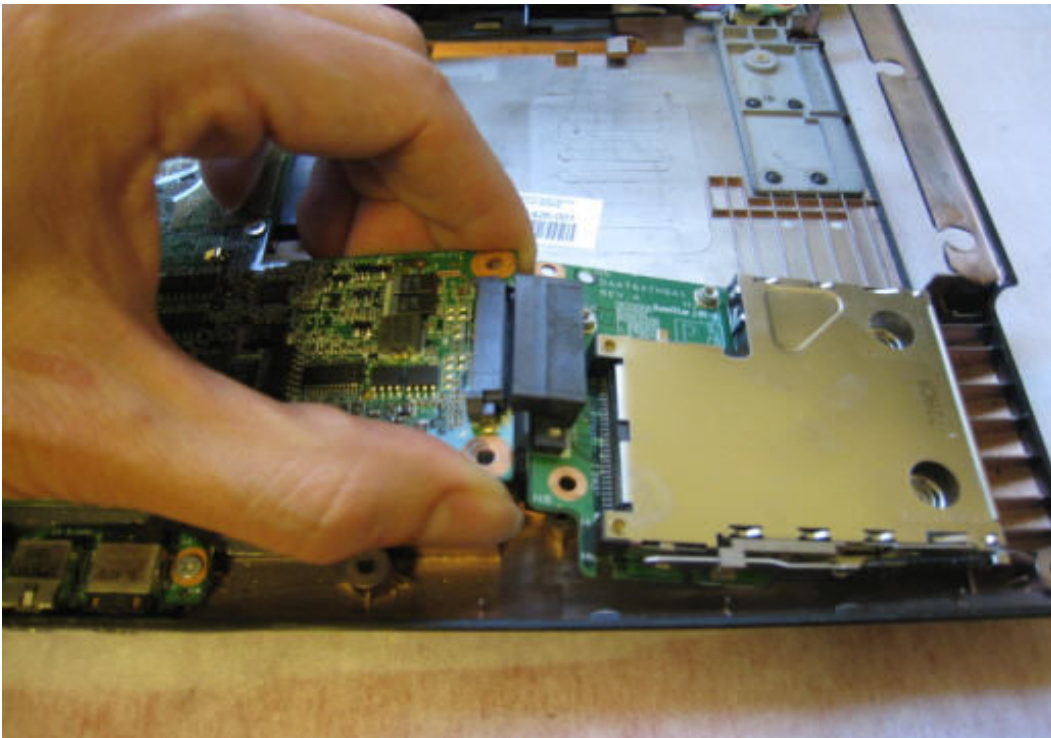
Removed screw from back strip.



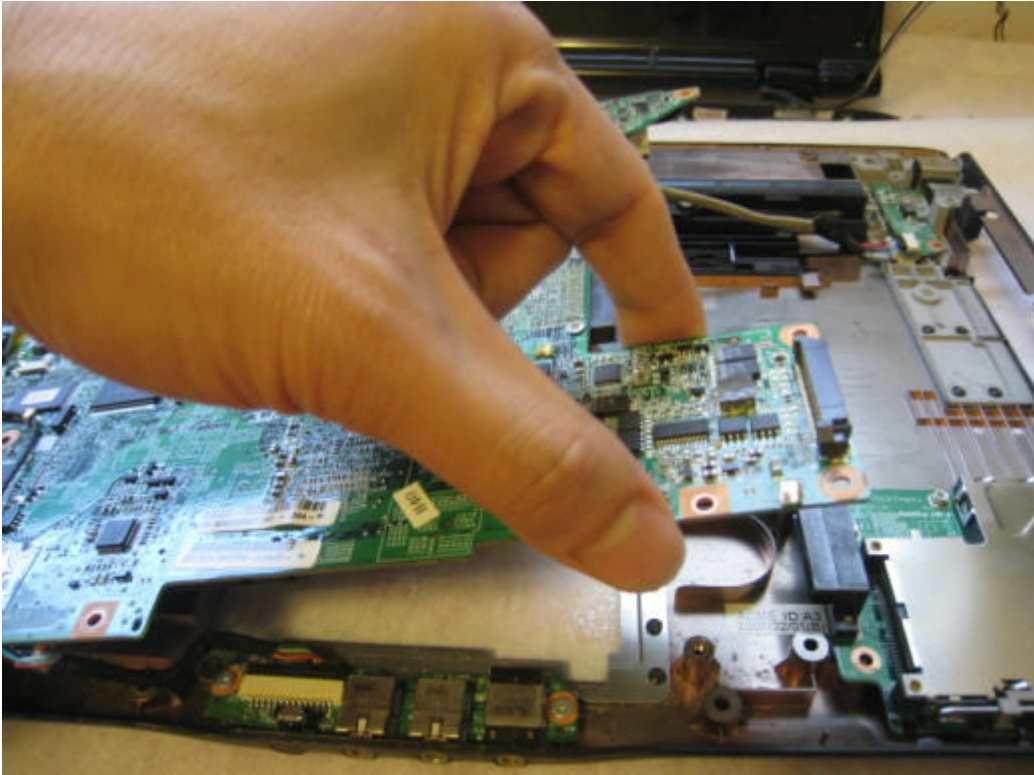
Start from the right and work your way around to remove the palmrest.



Systemboard is now accessible. Remove the two screws from systemboard.



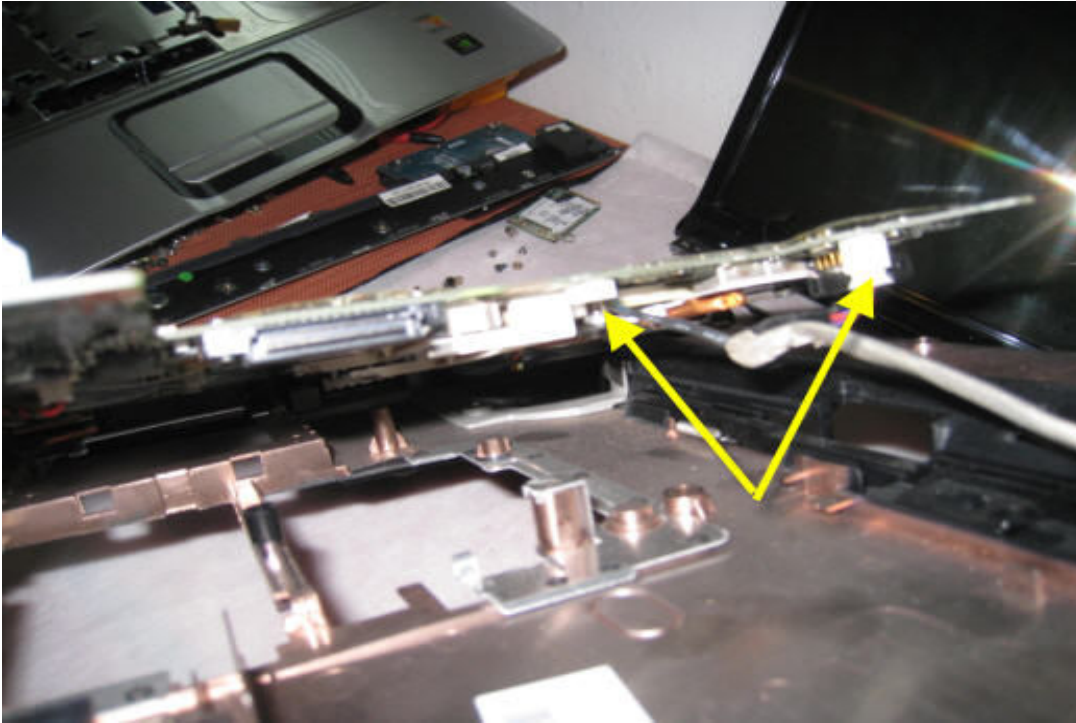
Remove screws from ExpressCard module and disconnect from systemboard.



Lift up systemboard to 45 degree angle.



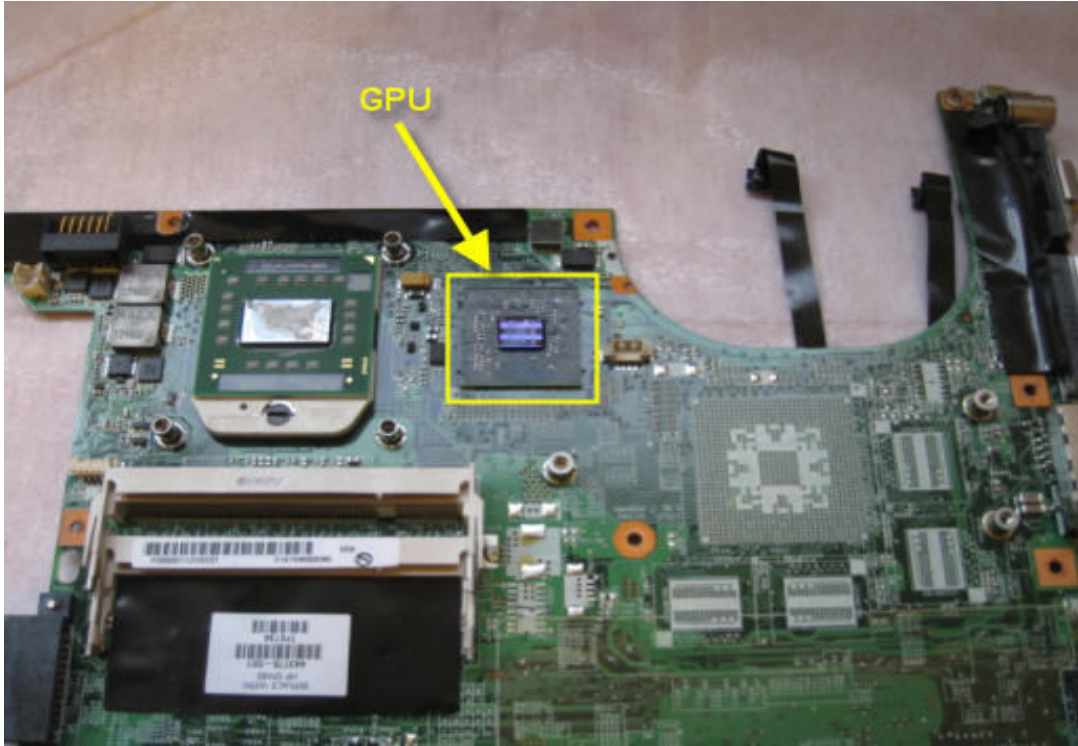
Disconnect cable from audio module.



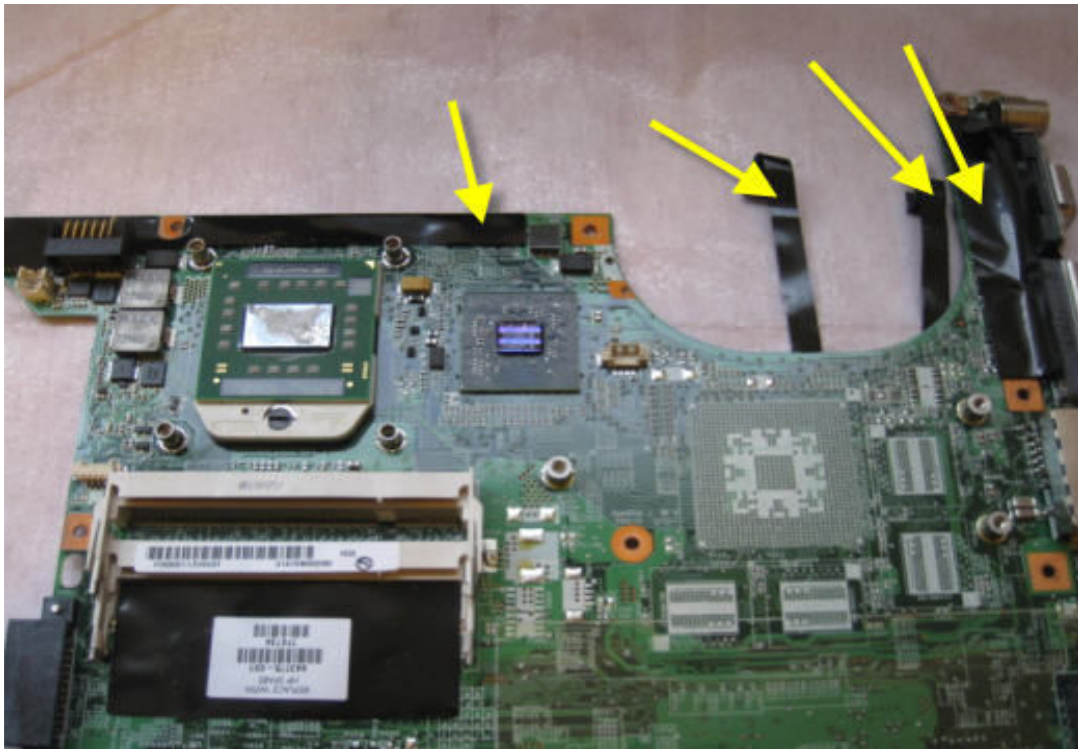
Disconnect power cables and USB connector cable from systemboard.



Remove heat sink screws



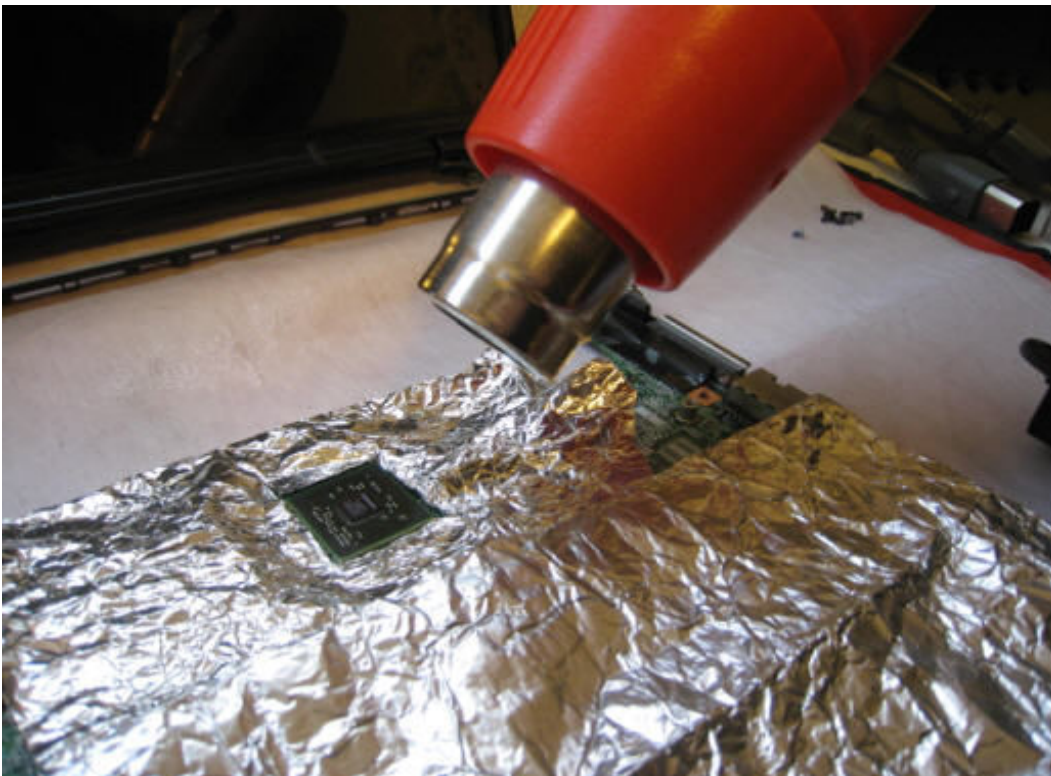
Heat sink and cooling fan removed. Now you see the GPU right next to the CPU.



Remove tape shields and cables from systemboard so they don't melt during the reflow process.

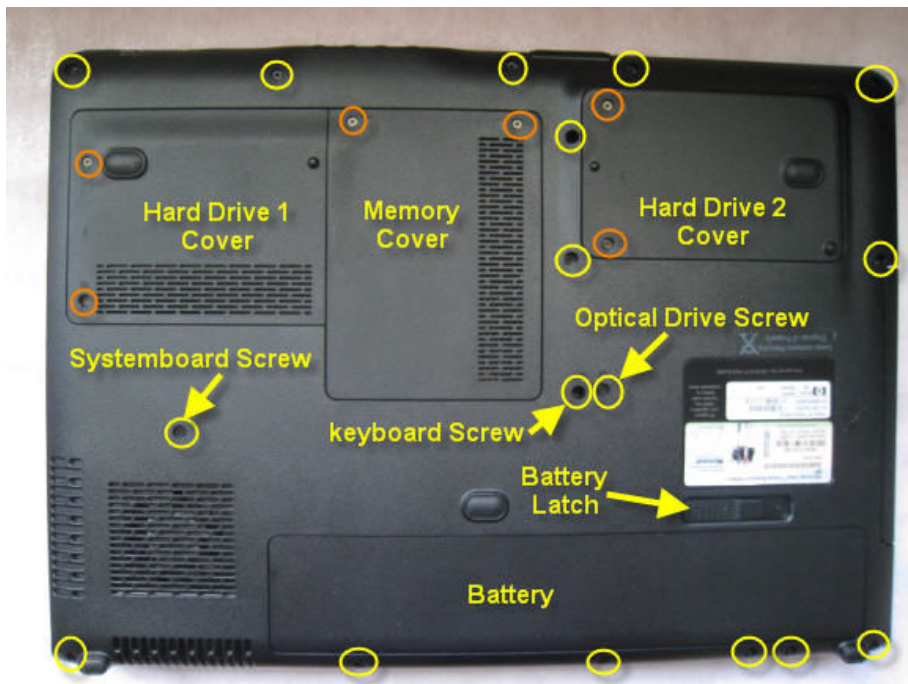


Protect components around the GPU with aluminum foil to avoid plastic parts from melting. **Don't wrap the whole board. You need to let the heat out or it will melt the plastic parts.**

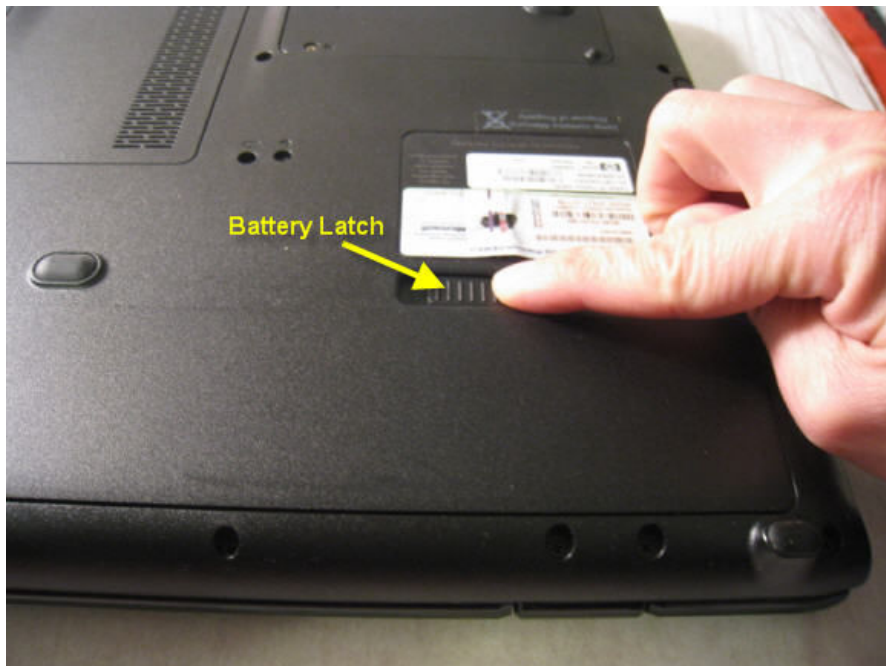


Now you are ready to reflow the GPU with your heatgun.

HP Pavilion DV9000 Disassembly



Remove all screws from bottom of laptop.



Slide battery latch to the right.



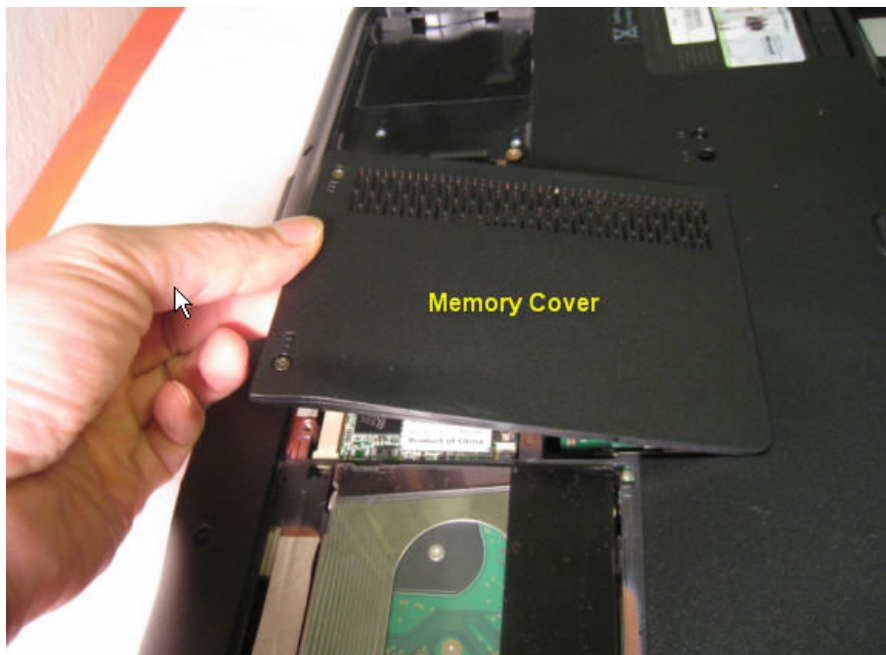
Lift up battery from the edge.



Remove hard drive 1 cover.



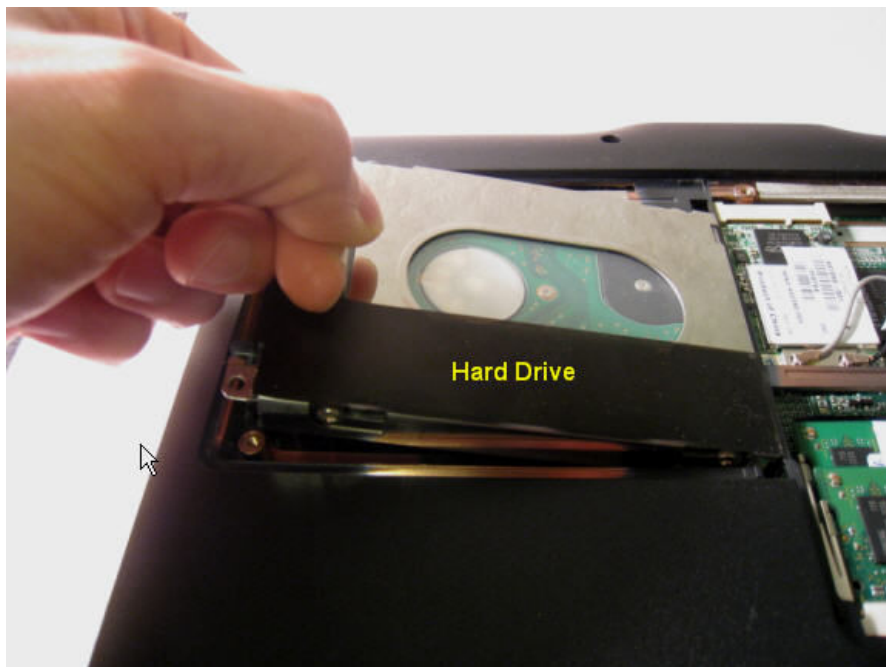
Remove hard drive 2 cover.



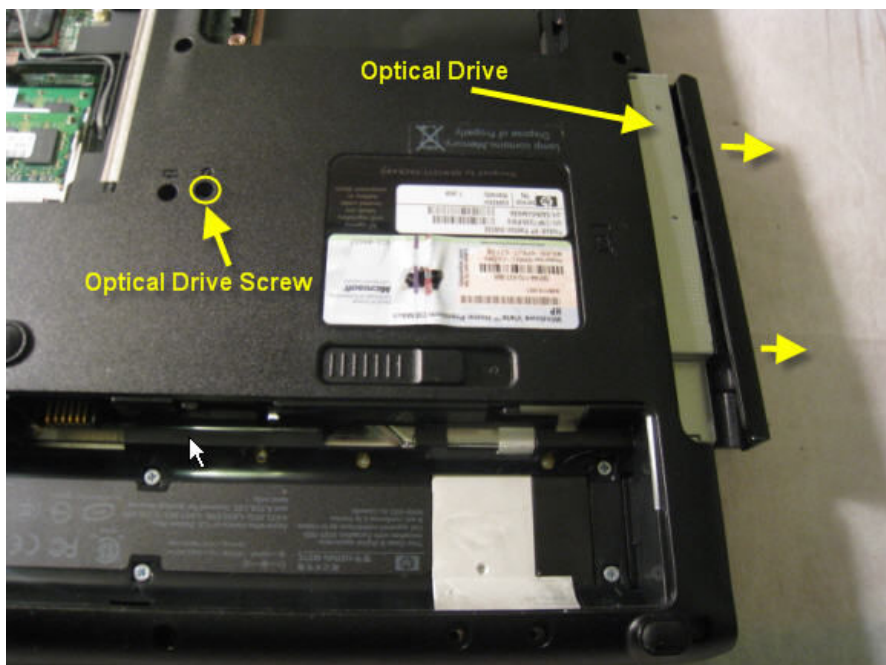
Remove memory cover.



All covers removed.



Remove hard drive by pulling the tab upward.

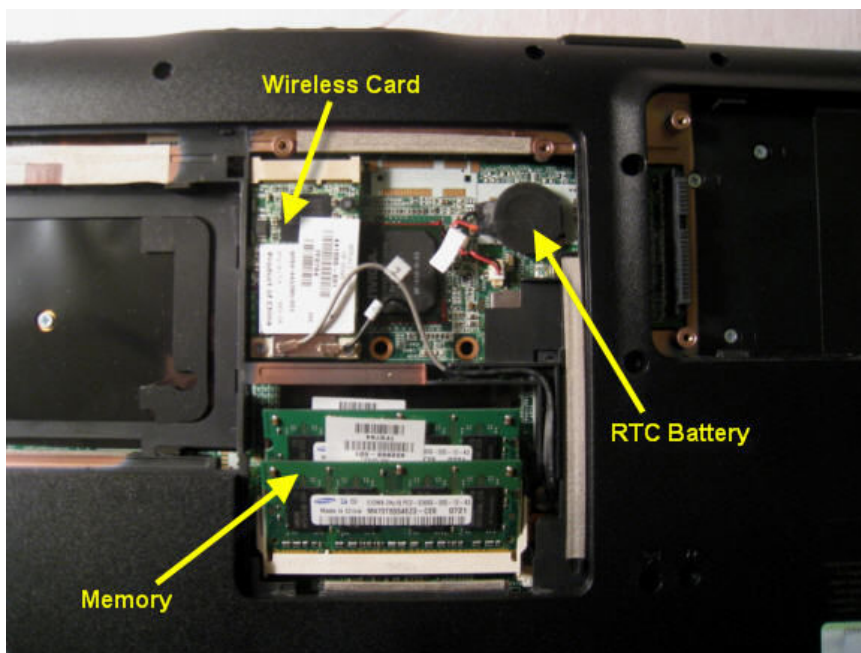


Remove optical drive

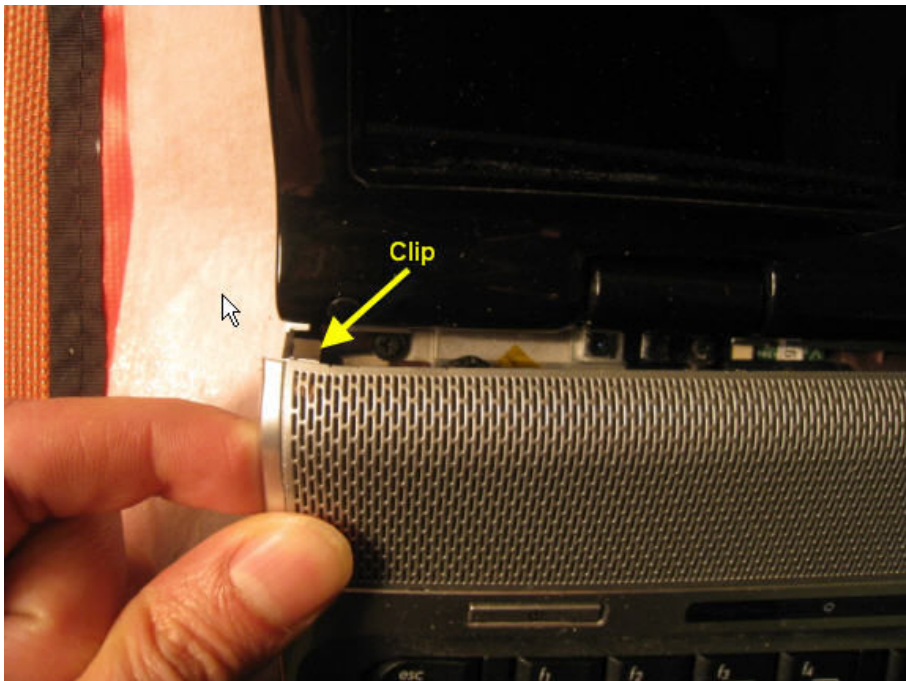
Laptop Video Issue Repair Guide – By NET2005



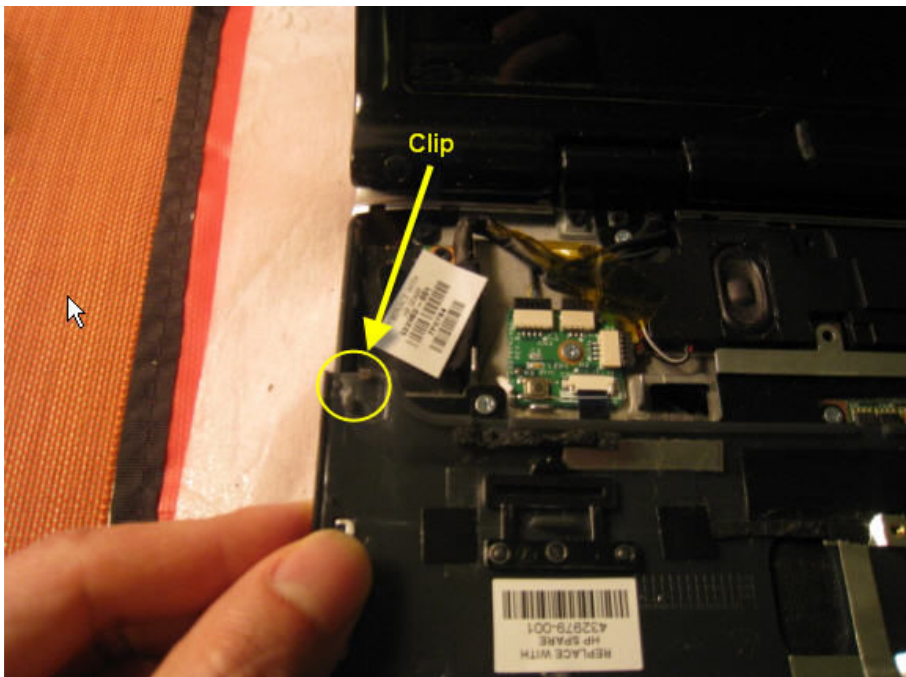
Remove 6 screws to remove the switch panel.



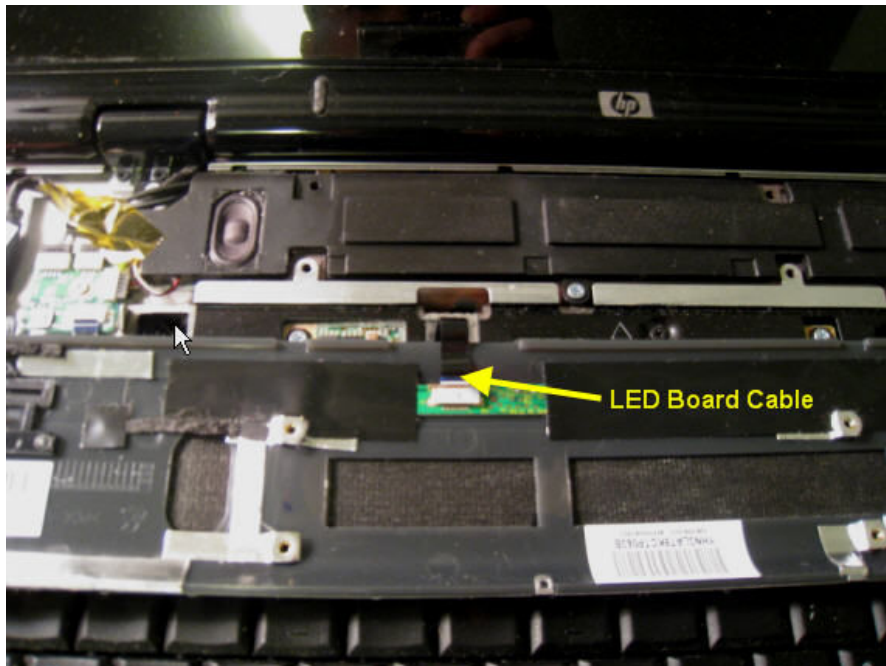
Remove 4 silver screws under hard drive.
Disconnect wireless card wires.



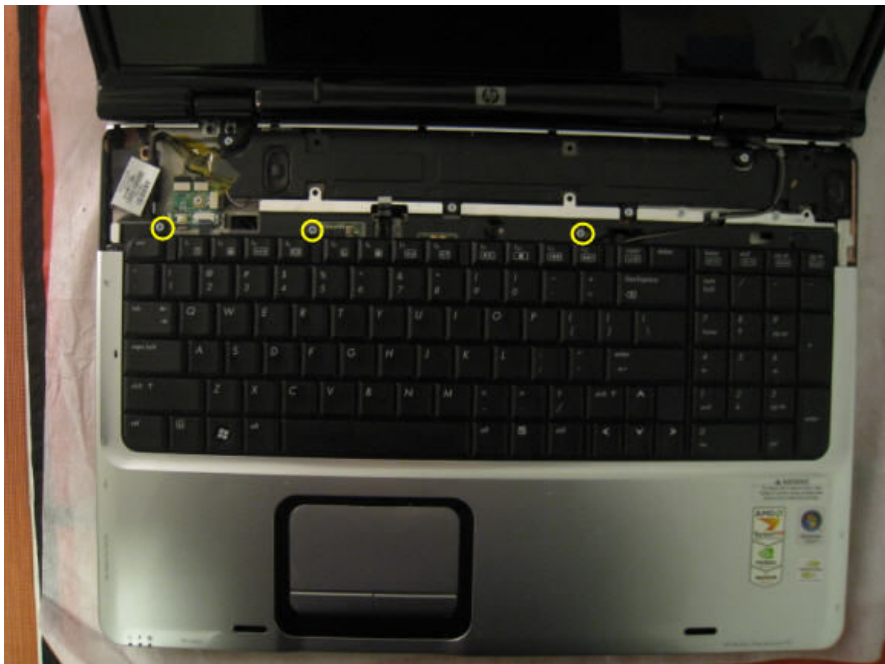
Open the laptop as far as you can. Lift the rear edge of the switch cover. You may need a little force to pop it open.



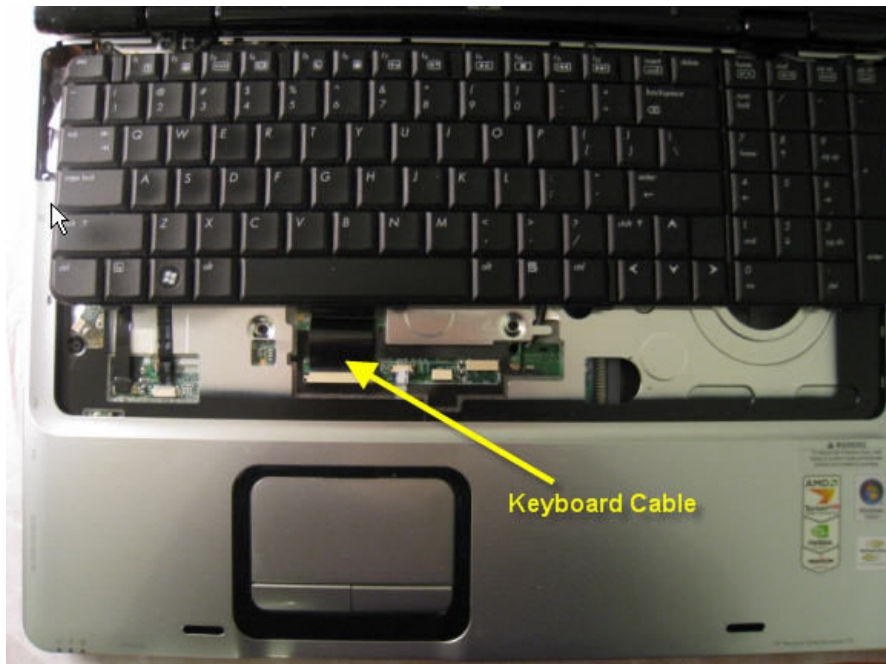
This clip is located where the switch panel and the palmrest meet.



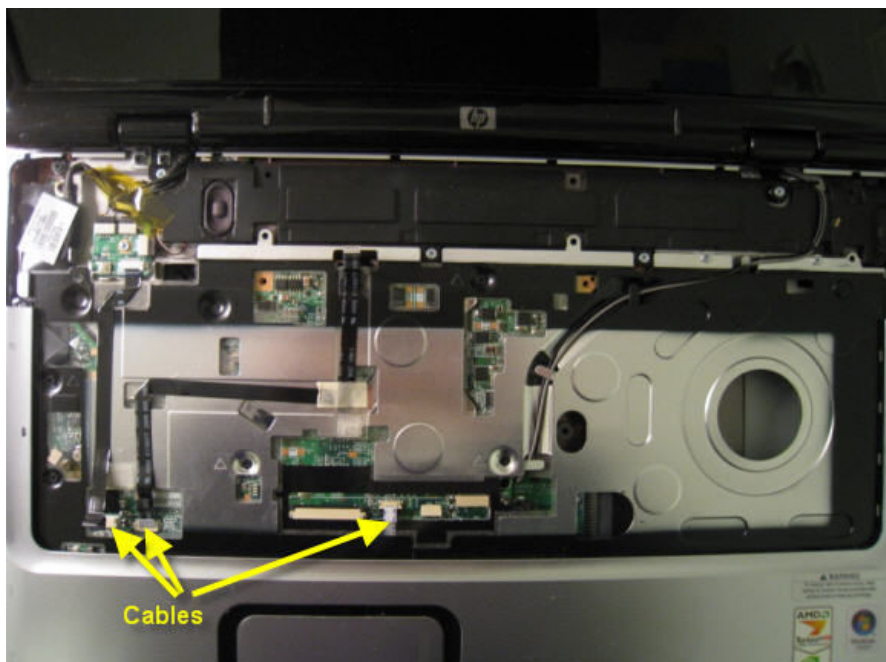
Disconnect the cable from the switch panel.



Remove the 3 screws to remove the keyboard.



Disconnect the cable from the ZIF connector.



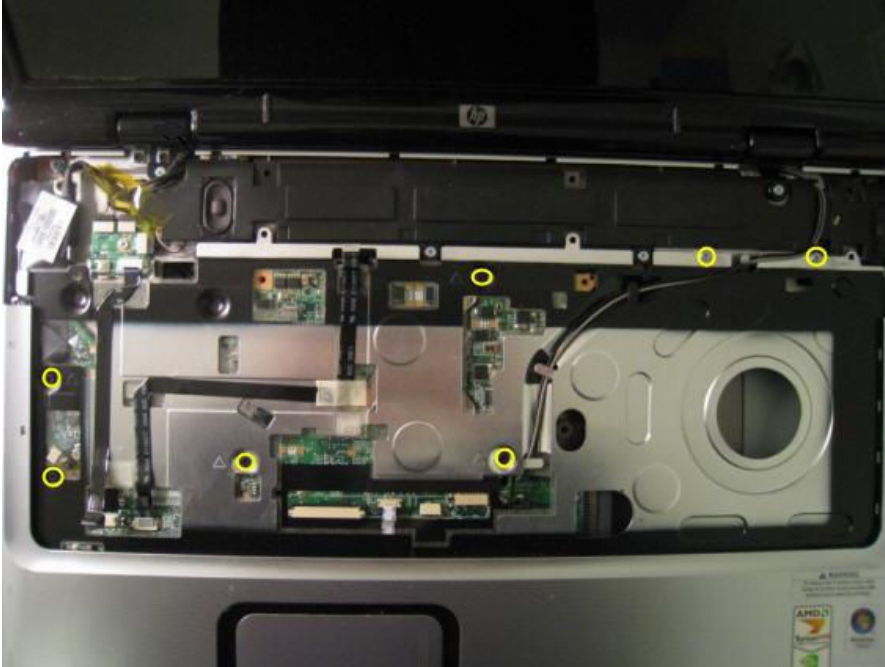
Disconnect the cables from the systemboard.



Disconnect the LCD connector from the systemboard. Remove the screws to remove the LCD panel.



Remove the other screw that's holding down the LCD panel. Pull out wireless antenna. Remove the screws from the speaker panel. You can remove the LCD now if you like.



Remove all visible screws.

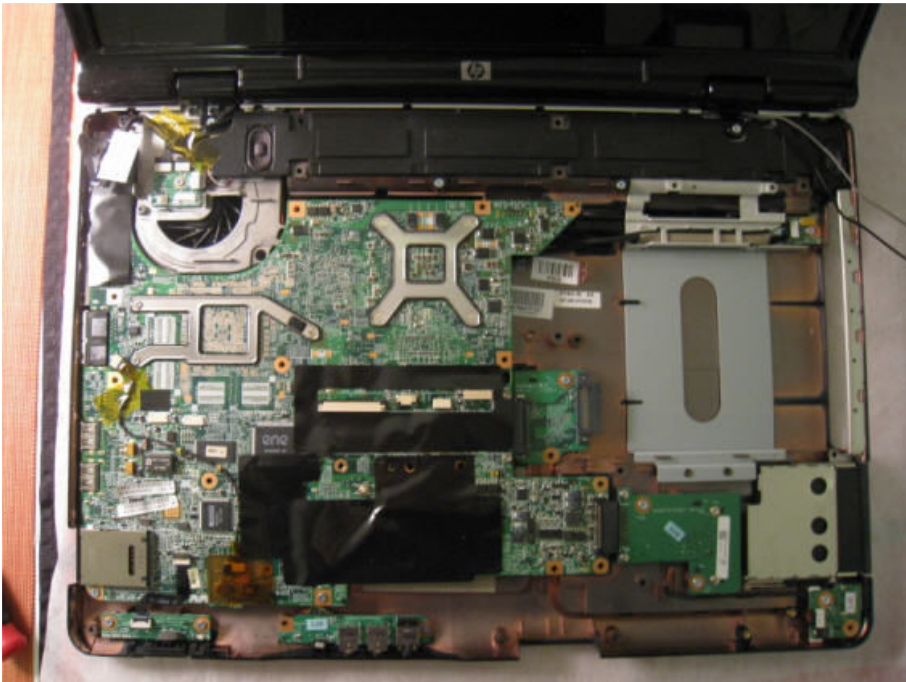


To remove the palmrest you can start from the top and lift the panel up until it disengages from the bottom. I like to start from the bottom and work my way around.

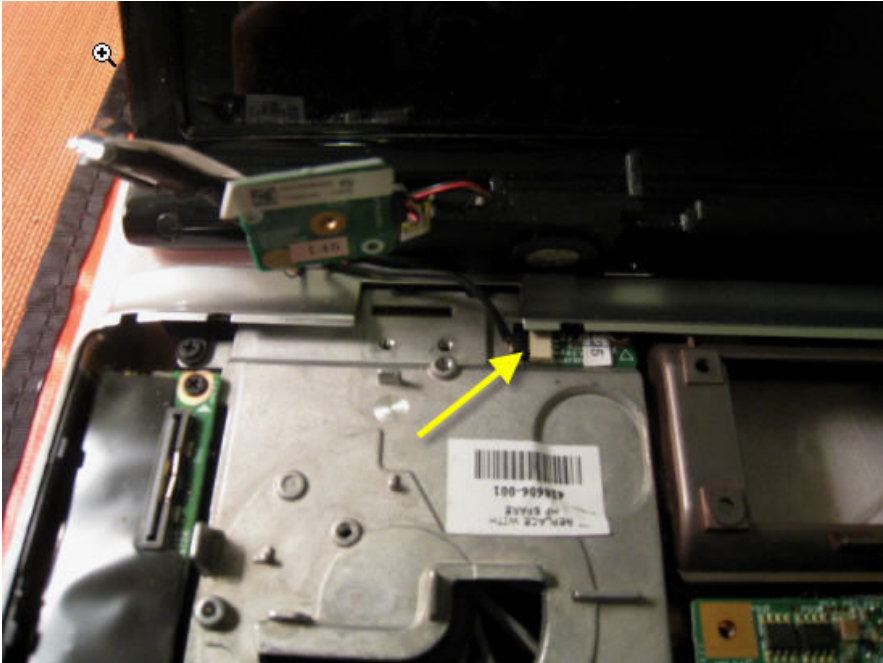
Laptop Video Issue Repair Guide – By NET2005



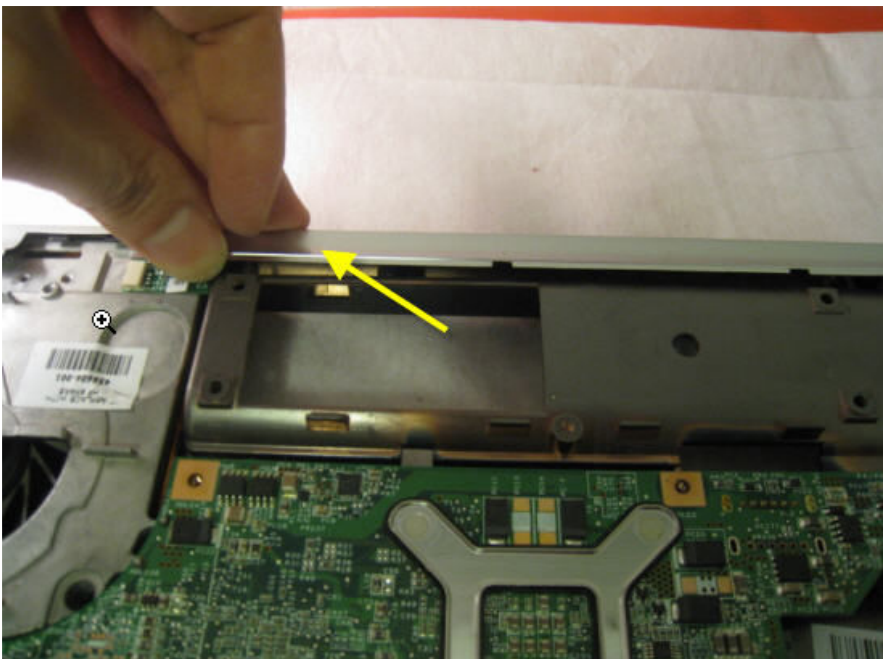
Work your way around the remove the palmrest.



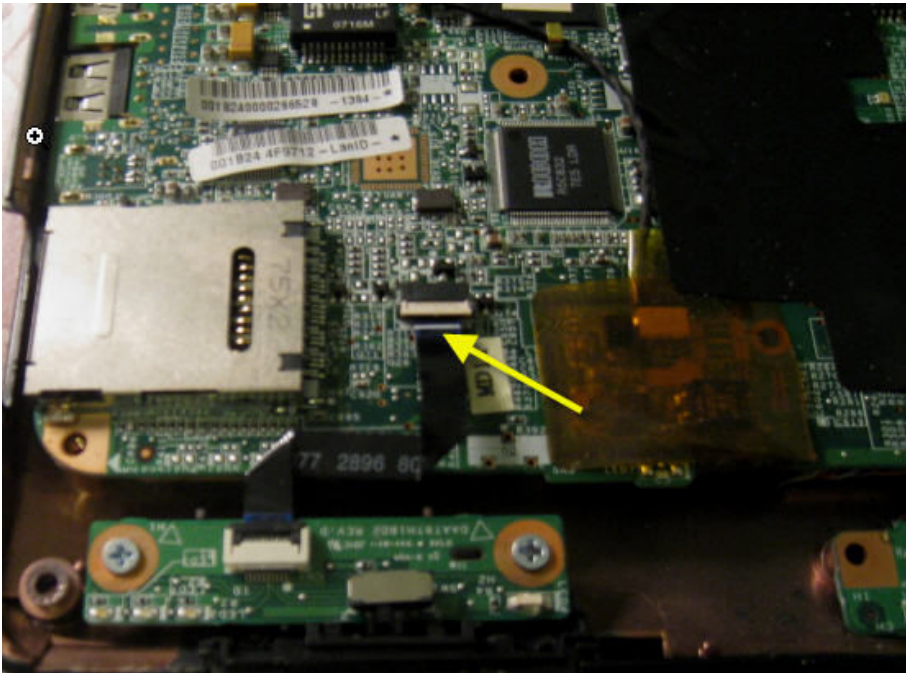
If you have not removed the LCD panel you should it now.



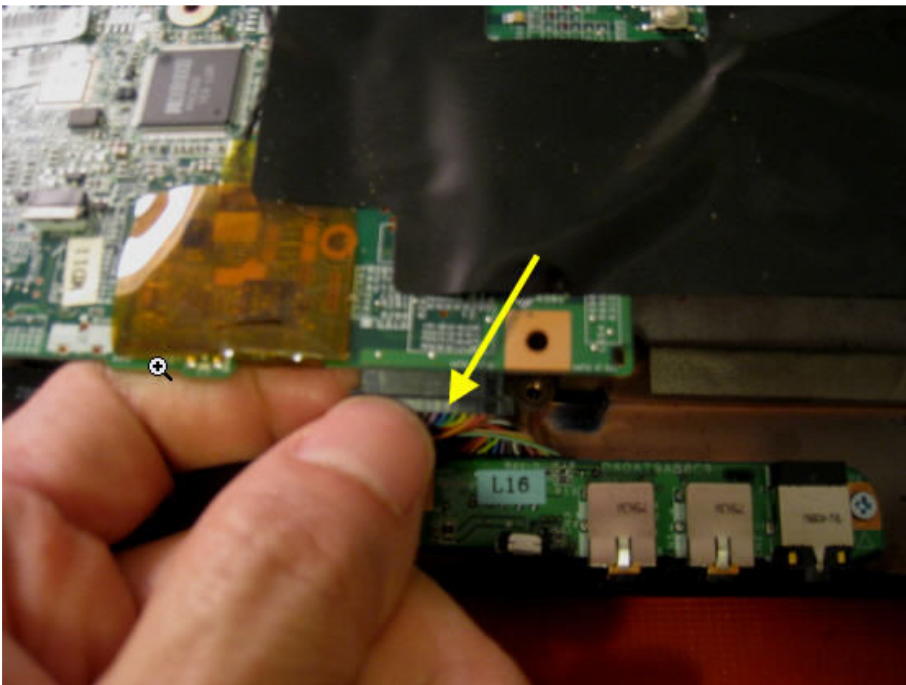
Disconnect connector from systemboard.



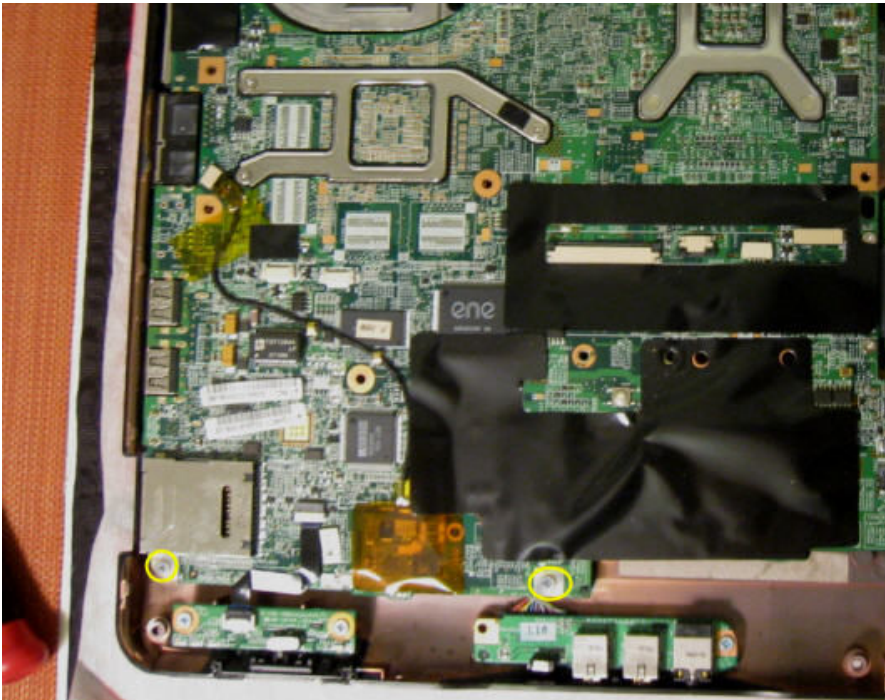
Remove screws then remove back piece from laptop.



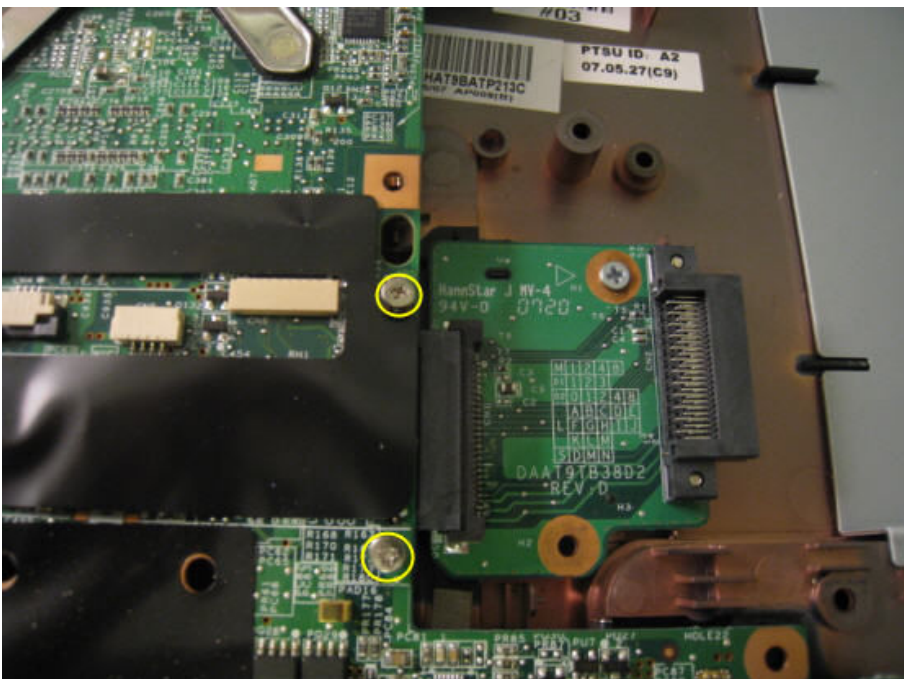
Disconnect the cable from the systemboard.



Disconnect the sound connector from systemboard.

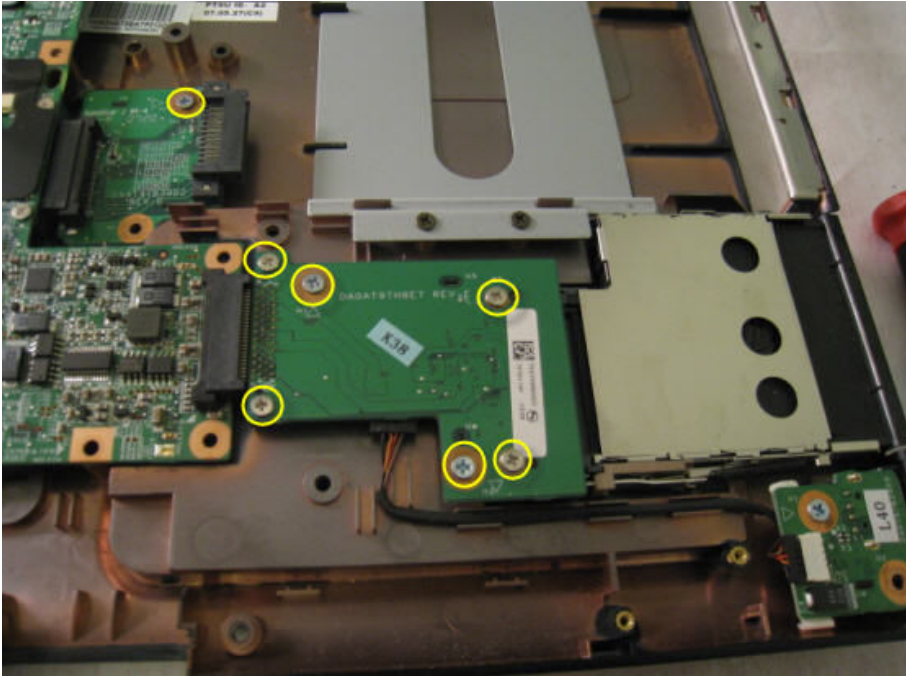


Remove screws holding down the systemboard.

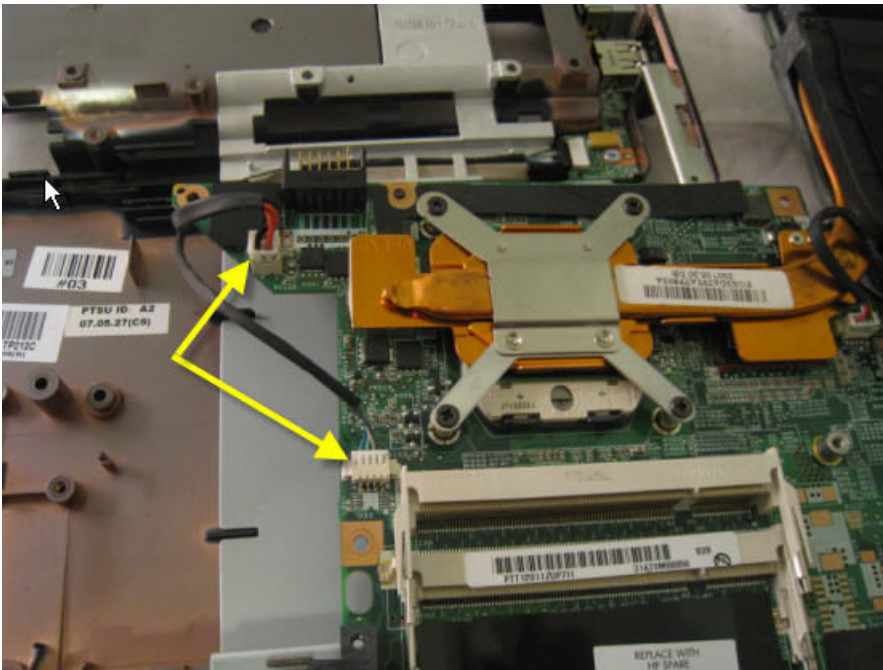


Remove screws holding down the systemboard.

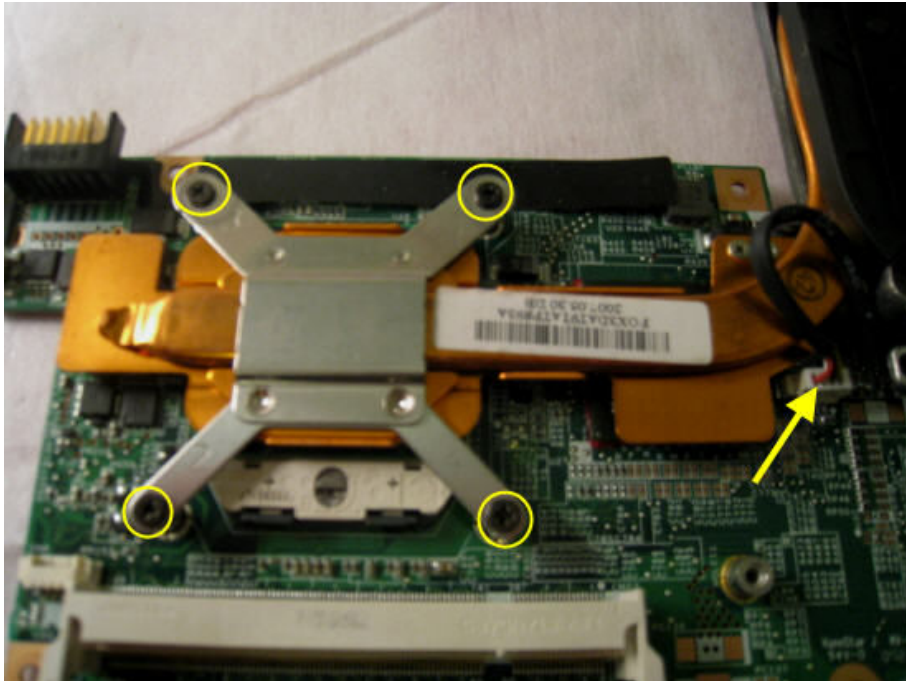
Laptop Video Issue Repair Guide – By NET2005



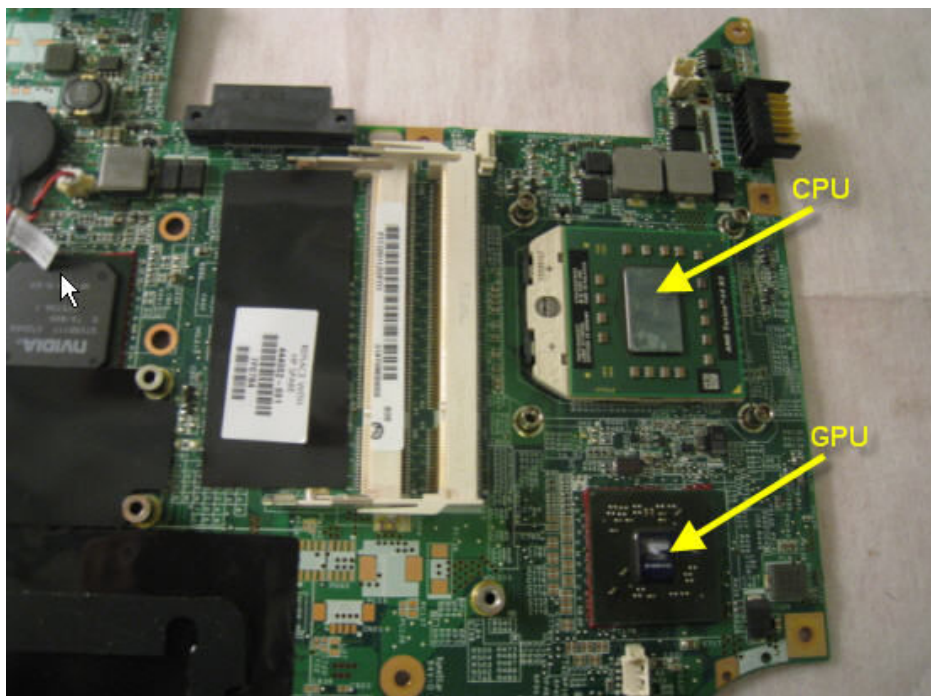
Remove screws from modules attached to the systemboard. Disconnect modules from systemboard. Lift system from right hand side to 45 degree angle and pull out systemboard.



Flip board over to disconnect connectors from systemboard.

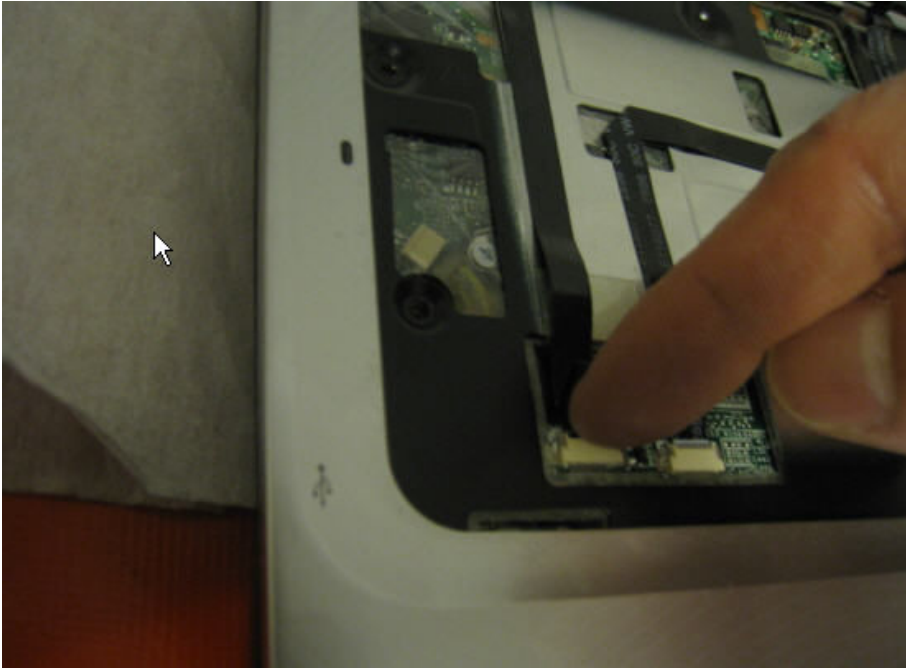


Disconnect CPU fan connector from systemboard. Remove screws from headsink.



Now you can see the CPU and GPU.

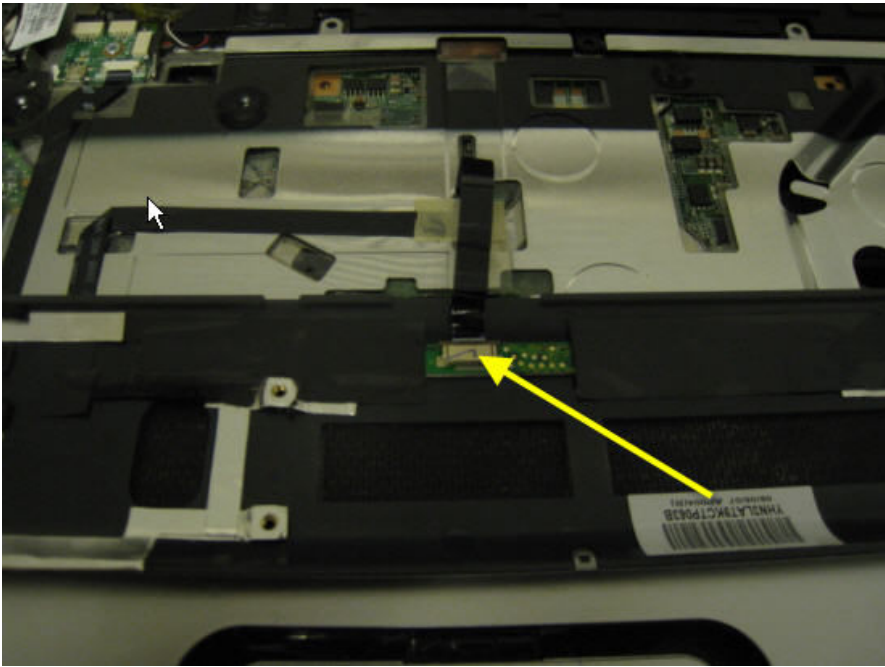
Notes and Tips:



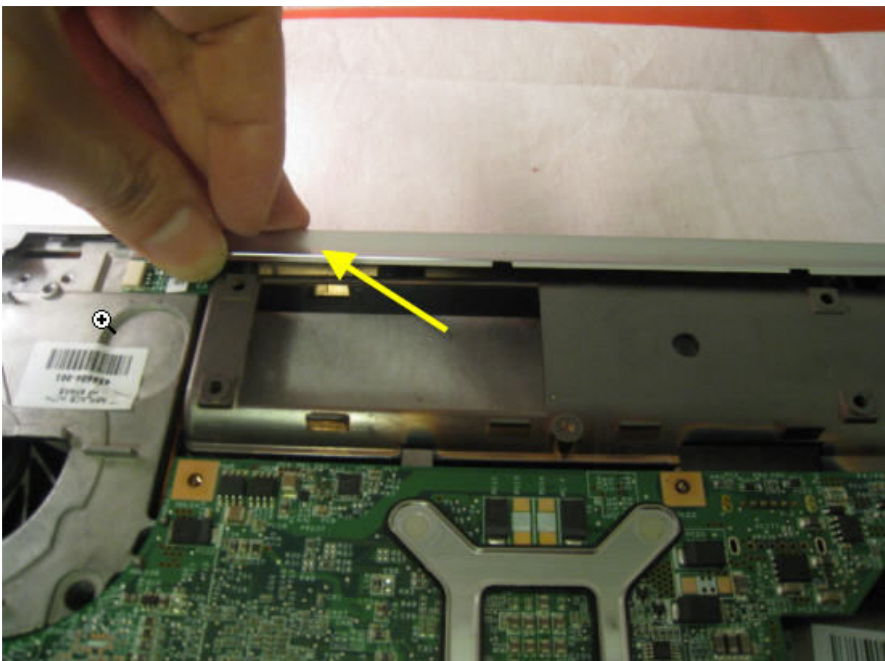
Best way to put that cable back is use your finger nail to push it back in. Place your nail on top of the cable where the line is and push it.



Place something underneath to support it and push it in with your finger nail.



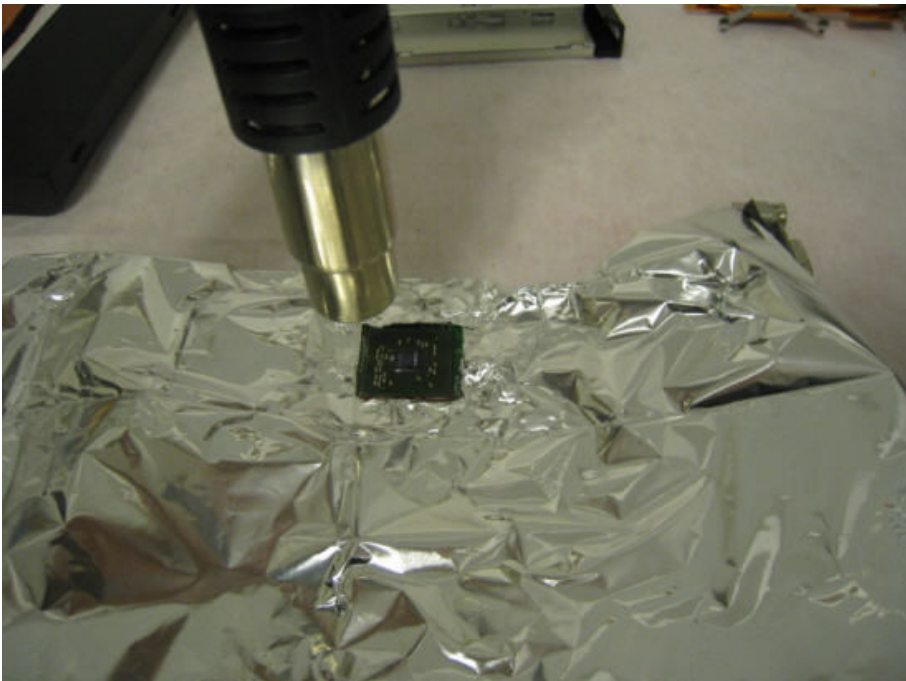
Make sure the cable goes under the brown piece.



Don't forget to put this piece back before you put the LCD screen back on.



Wrap it with aluminum foil. Cut an opening for the GPU.



Reflow the GPU with heatgun or hotair rework station.



If this is your second attempt you can try putting 4 quarters and 2 nickels on top of the GPU to give it a little pressure.

HP Pavilion TX1000 Disassembly



HP Pavilion TX1000 touch screen.



Remove the Battery. Remove case screws.



Remove 2 screws and remove hard drive cover.



Remove 2 screws and remove memory cover.



Remove wireless card cover.



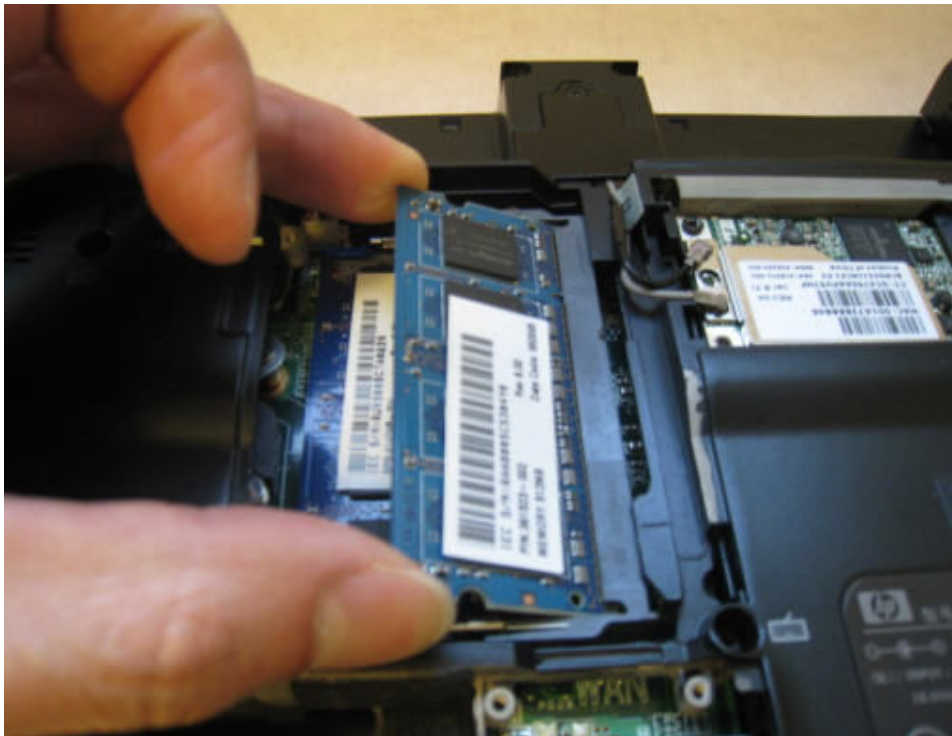
All covers removed.



Remove hard drive by pulling the tab upward.



Push the latch to the side to release the memory.



Remove the memory.



Remove the wireless antennas and the screws.



Push the pen in to eject it.



Remove the pen.

Laptop Video Issue Repair Guide – By NET2005



Slide the latch to release the optical drive.

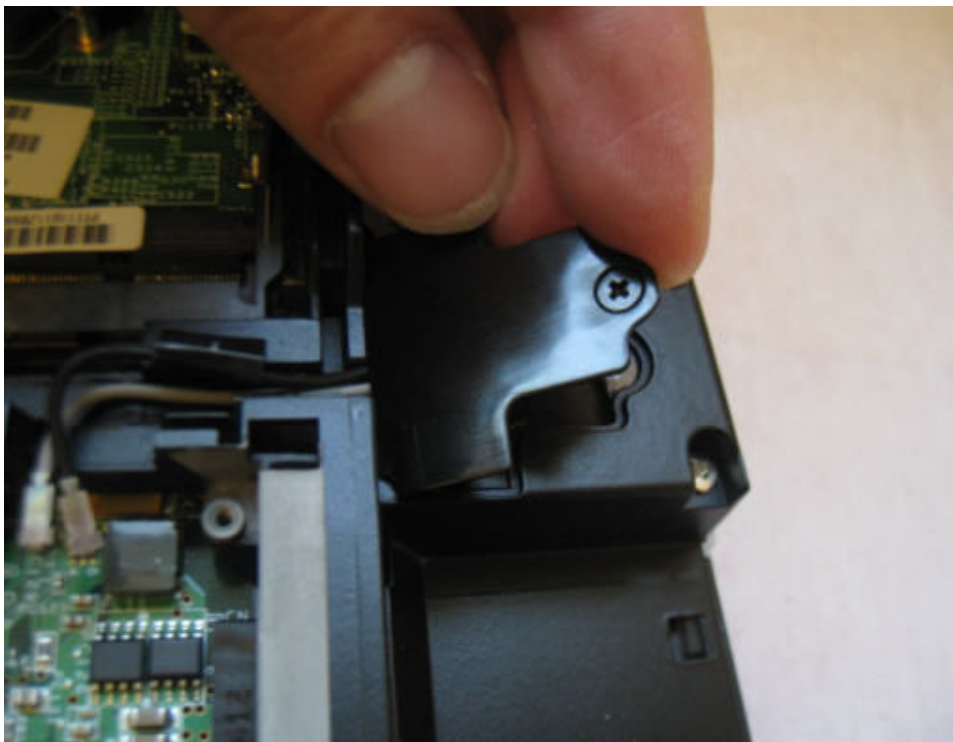


Remove the optical drive.

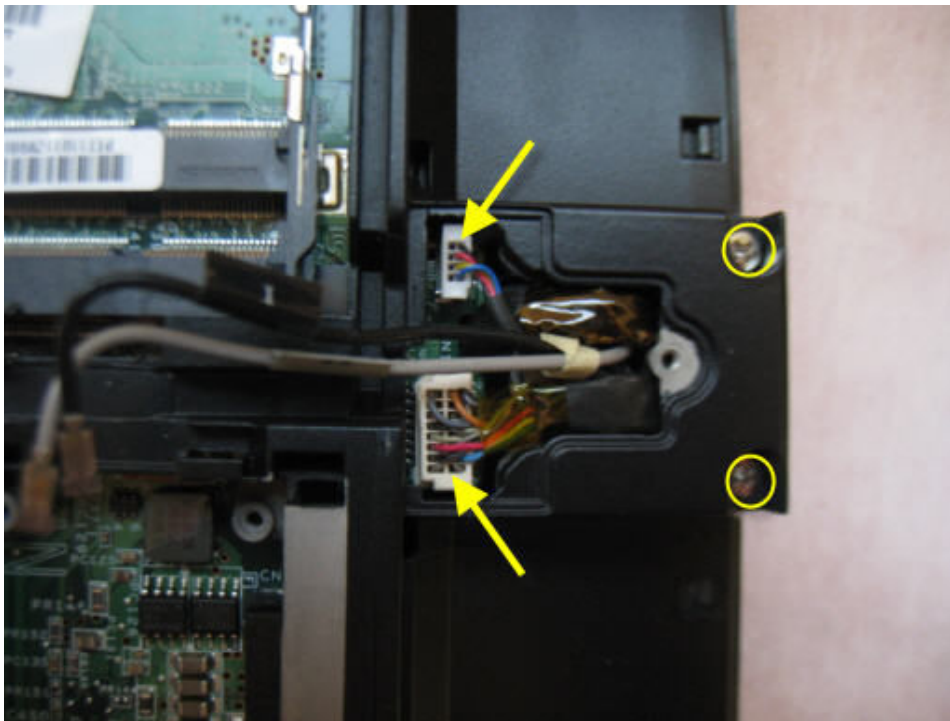
Laptop Video Issue Repair Guide – By NET2005



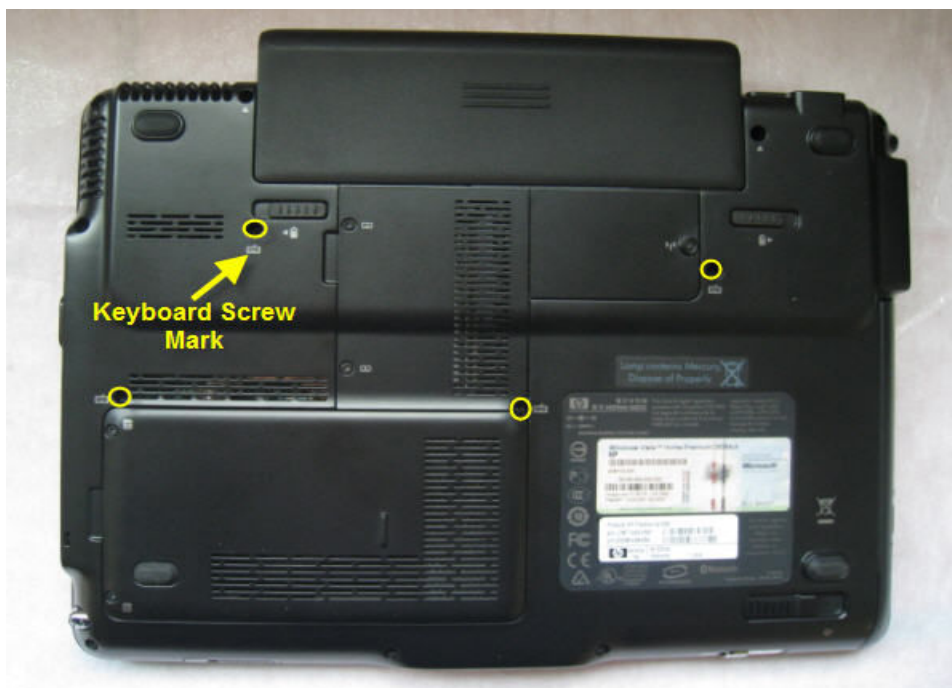
Remove the 3 screws under the optical drive.



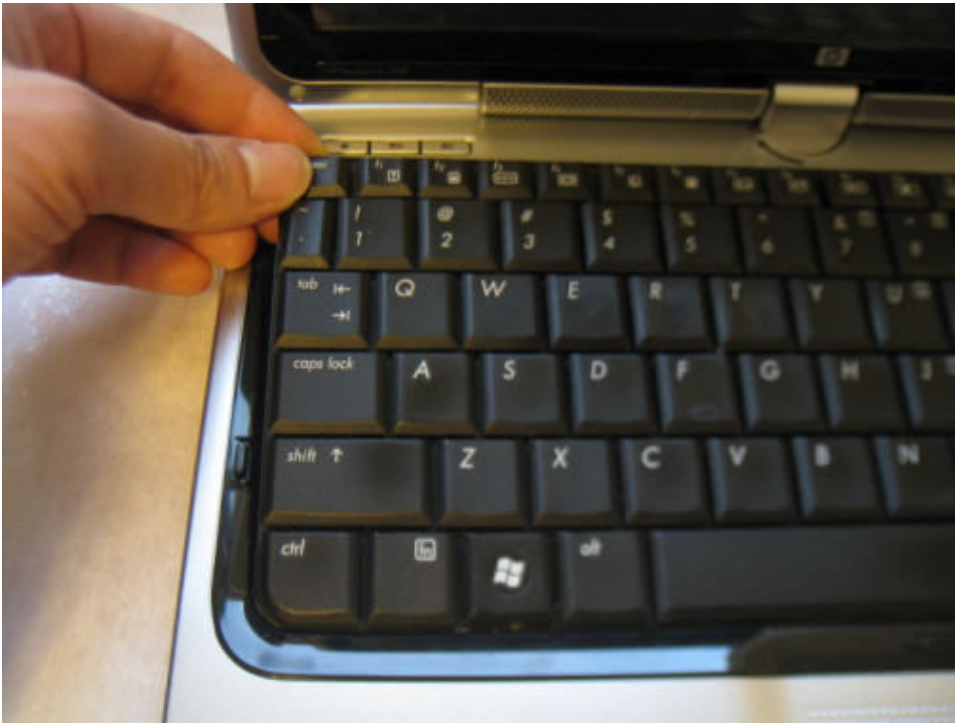
Remove the cable cover.



Remove the 2 screws and unplug the cables.



Remove the keyboard screw if you haven't done so.

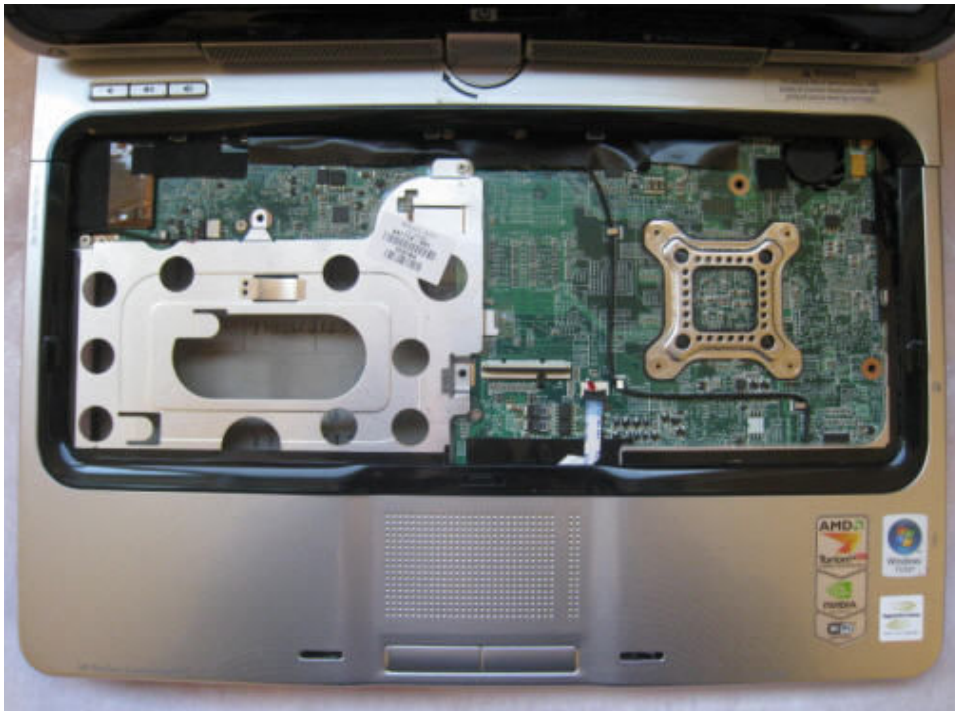


Lift up keyboard from the corner.



Flip up the black section of the connector to release the keyboard cable.

Laptop Video Issue Repair Guide – By NET2005



Keyboard removed.



Turn the screen to remove the light panel.



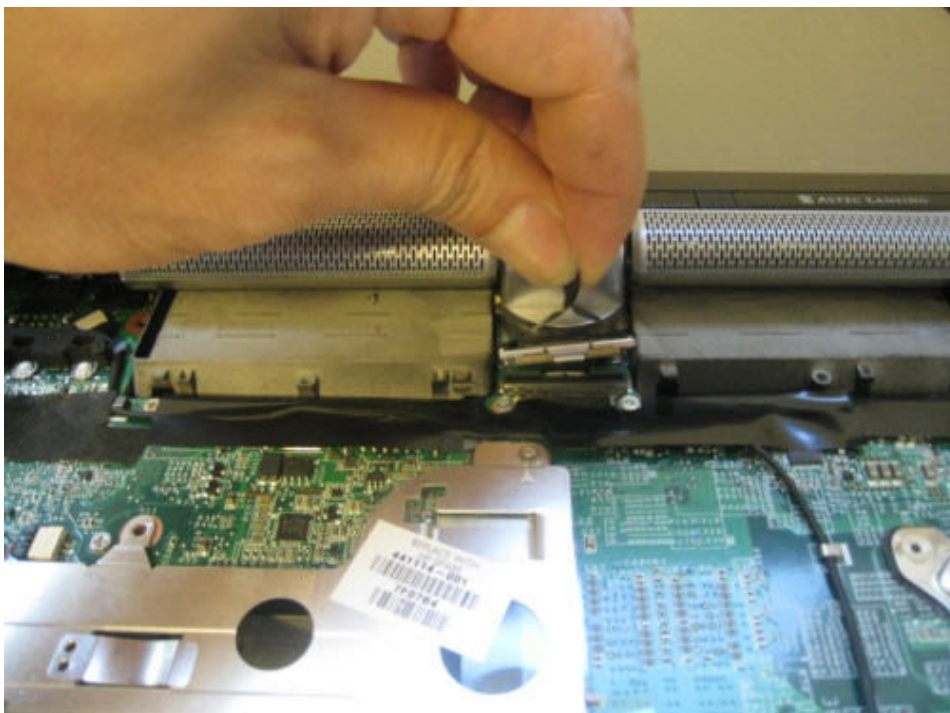
Lift it up and move it toward yourself.



Remove the small cover piece from behind the screen.



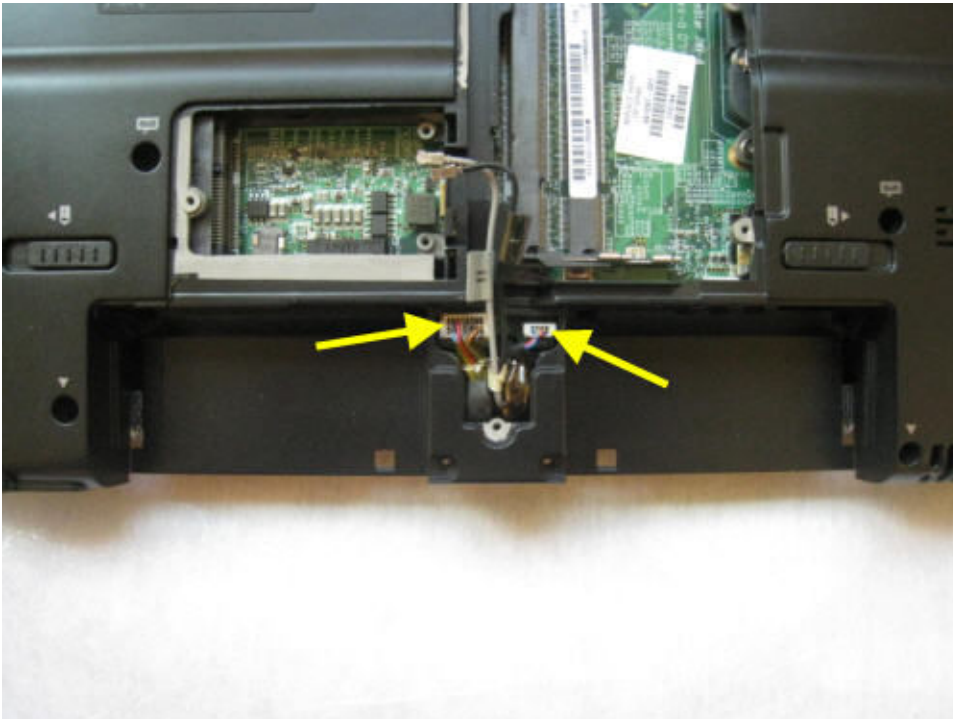
Slide the button light panel toward the front to remove it.



Remove the LCD cable from the systemboard.



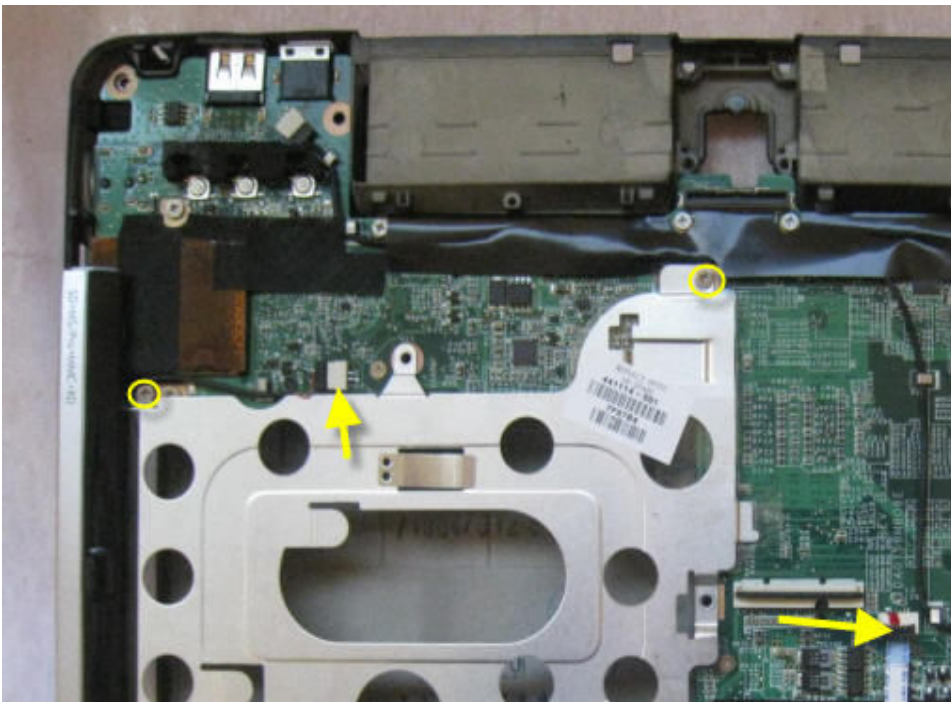
Remove the 2 screws that's holding the LCD screen.



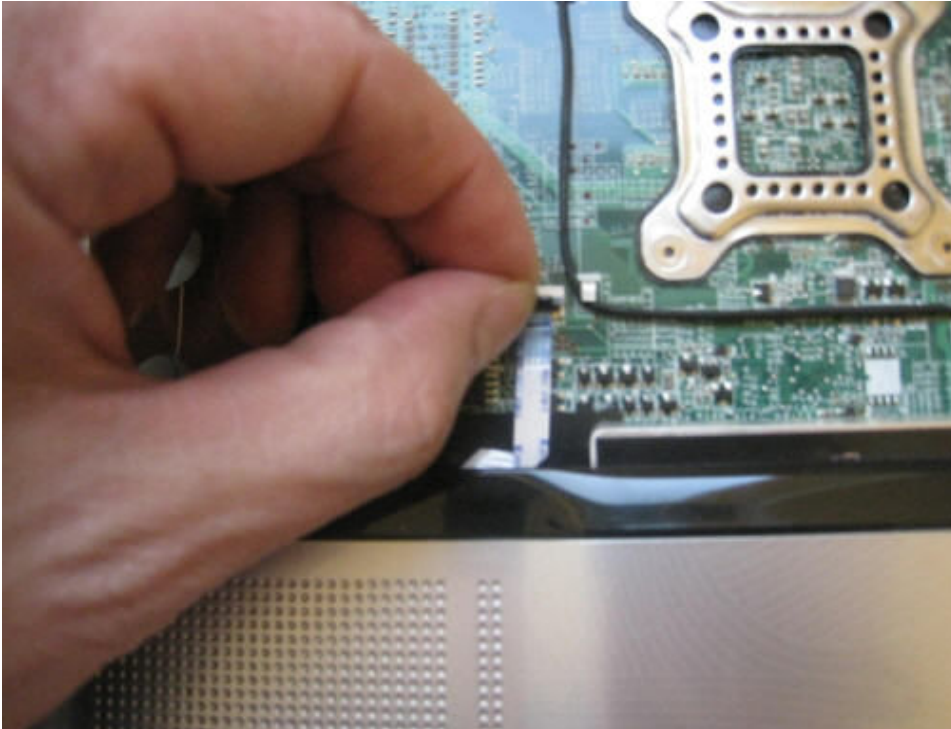
Unplug the cable connectors if haven't done so.



Remove LCD from laptop.



Remove 2 screws that's holding down the palmrest.



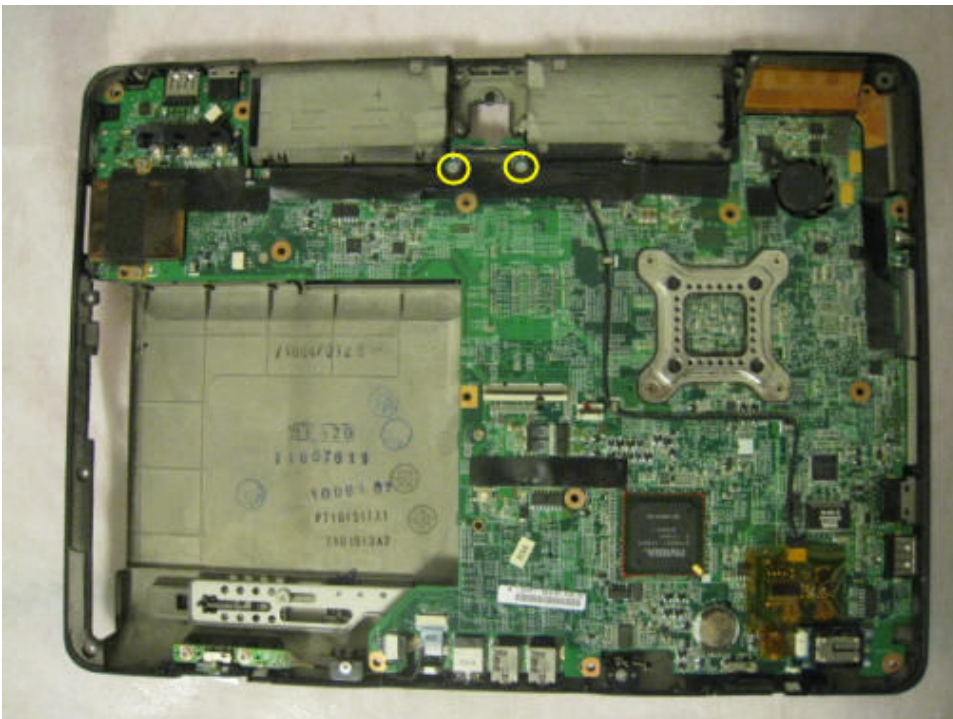
Release the cable from the systemboard.



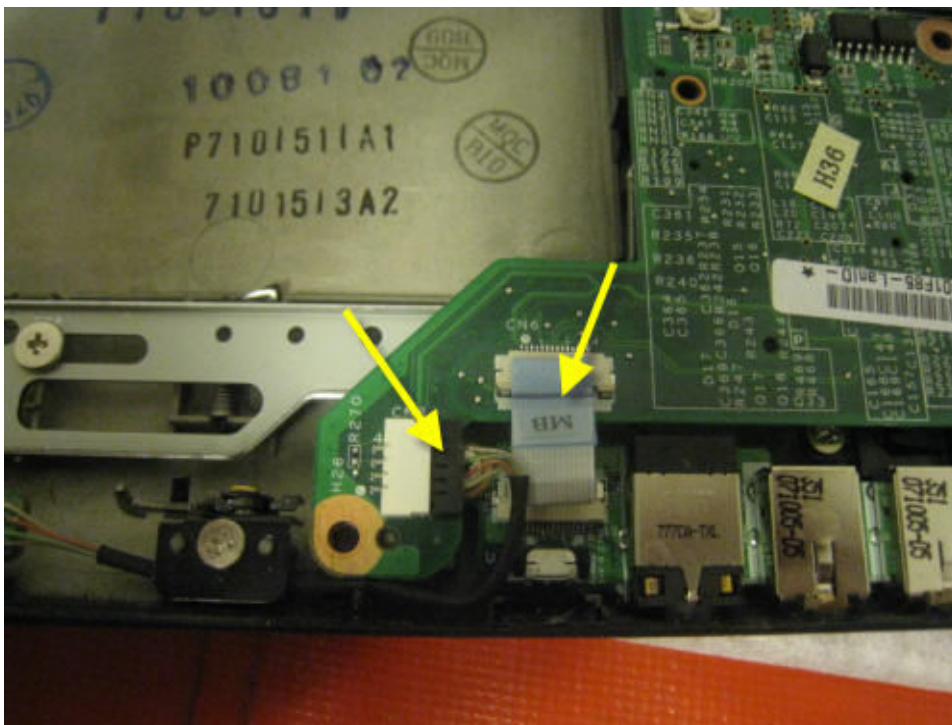
Lift up palmrest to remove it.



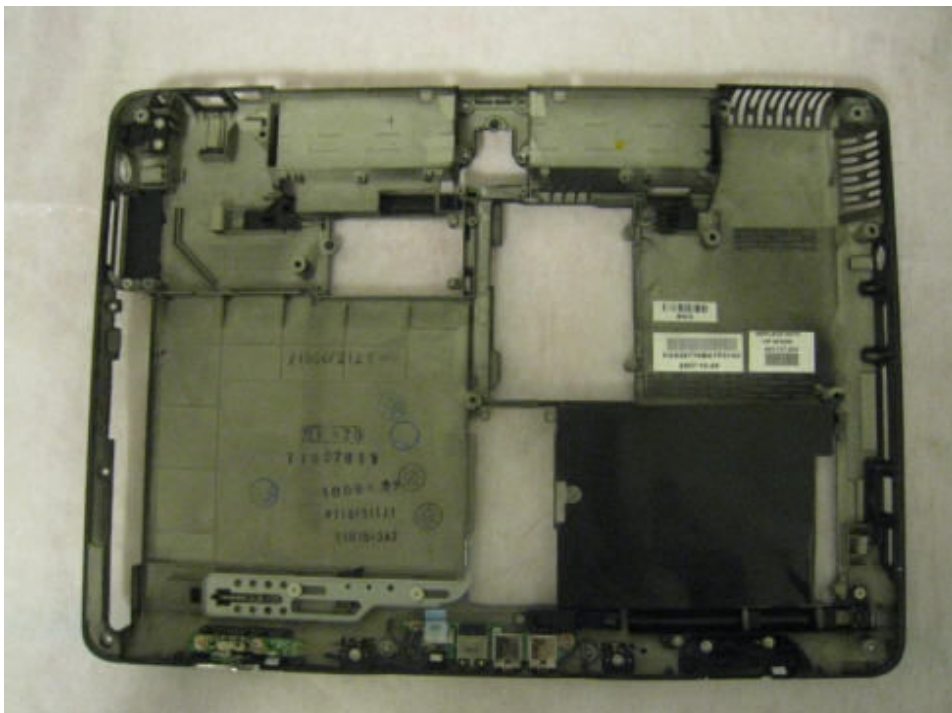
Work your way around the palmrest.



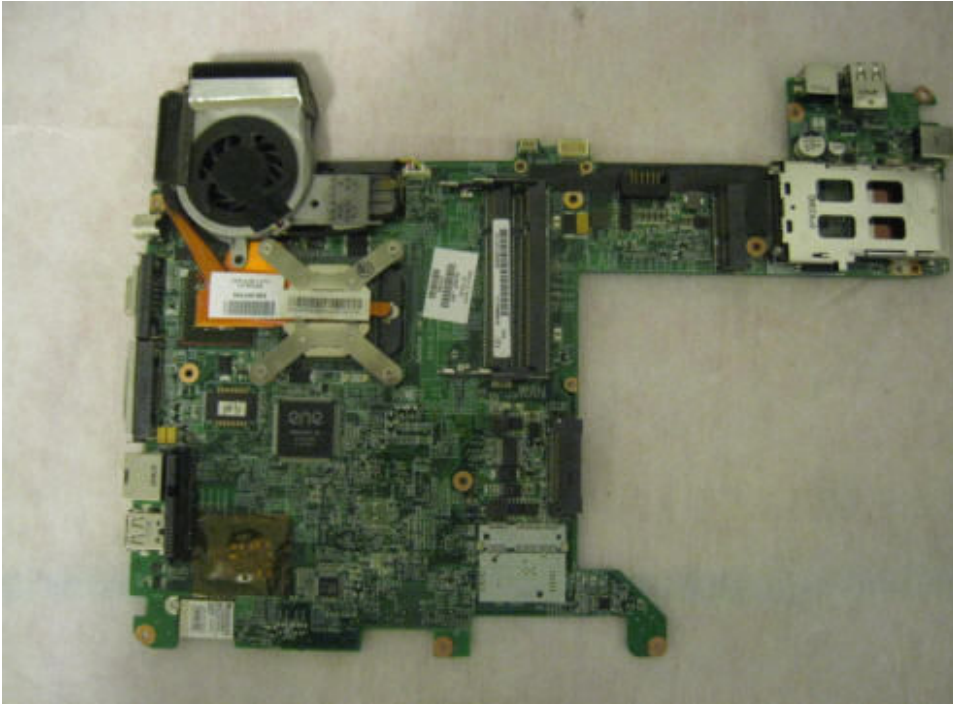
Remove the 2 screws that's holding down the systemboard.



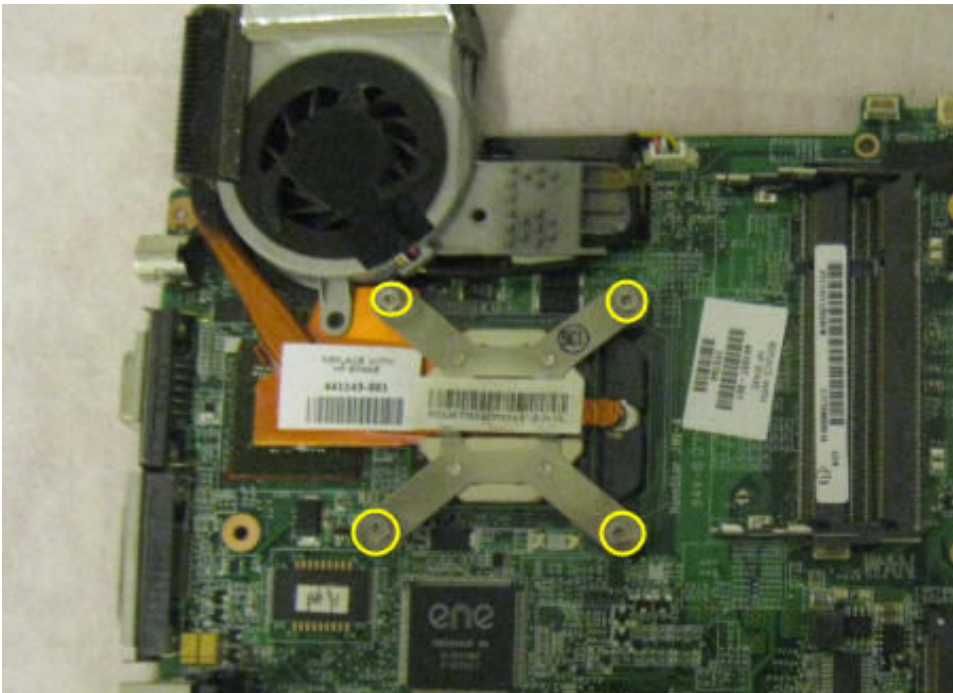
Disconnect the cable from the systemboard. Lift the systemboard to 45 degree angle to remove the systemboard.



Systemboard removed from the bottom case.



Systemboard.



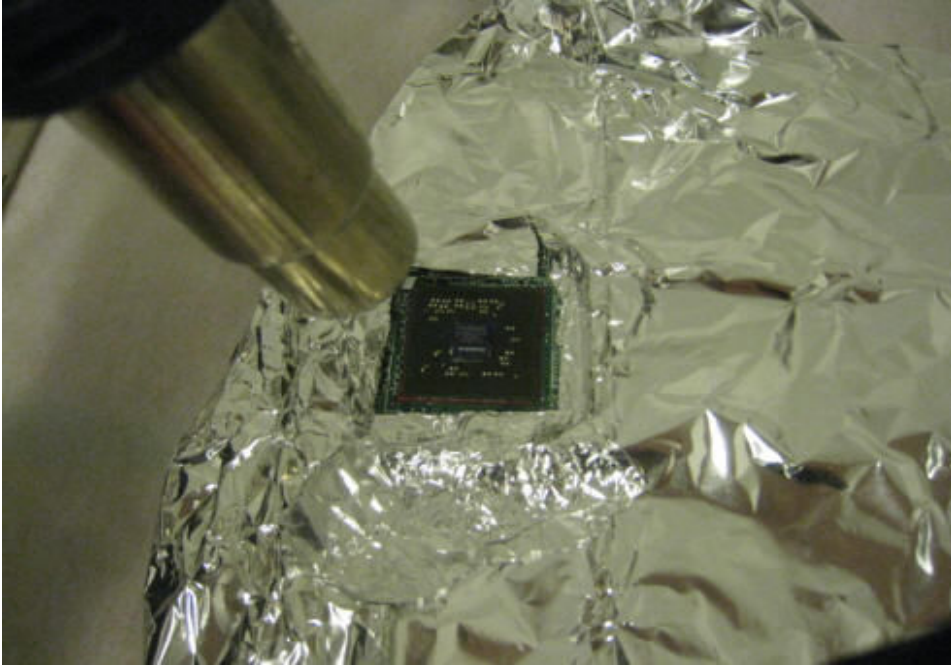
Remove 4 screws from heatsink.



Remove heatsink from systemboard.



Here's the GPU. The one next to the CPU.



Protect components around the GPU with aluminum foil to avoid plastic parts from melting. **Don't wrap the whole board. You need to let the heat out or it will melt the plastic parts.**



Add 4 quarters and 2 nickels to add little weight and pressure.



Test booting up before putting everything together.